



Push Trike Steering
9-24-2013



Check the front assembly first



Remove the handle bars and front wheel/fork assembly from the front of the trike. See next slide.



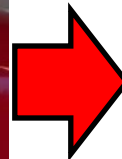
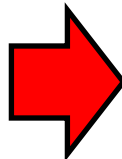
If both rods are in place, similar to the picture below you are done checking the front assembly.



Remove the top bushing using a flat head screw driver. Once the top bushing is removed check to see if the rods are in the correct location, shown in the picture above. If the rods are in the **CORRECT LOCATION** see slide 7. If the rods **ARE NOT** in place or look different from the picture above see the next slide.



If either of the rods are not connected to the metal washer they need to be repositioned. See next slide.

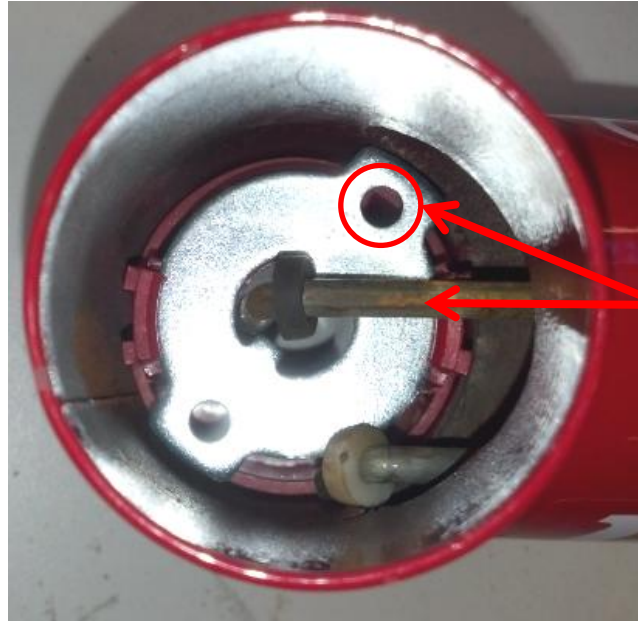
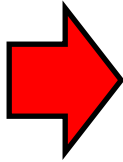


Use needle nose pliers to reposition the rods into their correct location. See next slide to determine correct location.

Push Trike Steering | Repositioning the Rods (Correct Location)

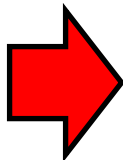


Turn Left



The rod with the black rubber washer is further forward when turning left, thus goes in the right hole.

Turn Right



The rod with the white rubber washer is further forward when turning right, thus goes in the left hole.

Reposition rods and then see next slide.



Correct Location



Place the top bushing back in place



Once the rods are in the correct location insert the top bushing back into the frame. Press the bushing into the frame using your hand. After this reassemble the front fork and front handle bars. See next slide.



Turn Left



Turn Right

Test the steering to see if the problem is fixed. If the steering is not fixed see the next slide.



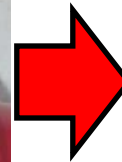
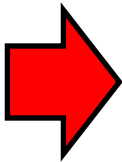
Remove the parent push bar and check the rear bushing.
See the next slide.



Using a Phillips screw driver to remove the screws from the sides. After removal use a flat head screw driver to hammer out the rear bushing. If the rods are in the correct location shown above, put the rear bushing back in place and see slide 15. If not see the next slide.



If either of the rods are not connected to the metal washer they need to be repositioned. See next slide.

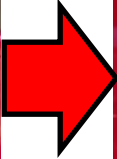


Use needle nose pliers to reposition the rods into their correct location. See next slide to determine correct location.

Push Trike Steering | Repositioning the Rods (Correct Location)

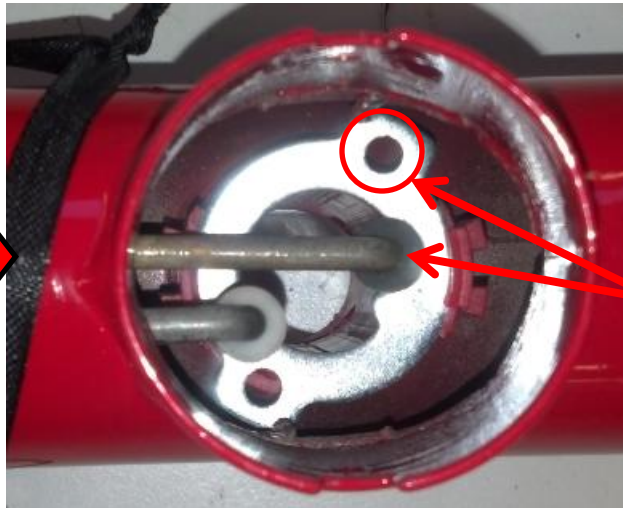


Turn Handle Left



The rod with the white rubber washer is further back when turning left, thus goes in the left hole.

Turn Right



The rod with the black rubber washer is further back when turning right, thus goes in the left hole.



Correct Location



Place the top bushing back in place



Once the rods are in the correct location place the rear bushing back in place. Press the bushing into the frame using your hand. Assembly screws using a Phillips screw driver. See next slide.



Turn Left



Turn Right

Test the steering to see if the problem is fixed.