

FLYER™

BY RADIO FLYER

**FLYER™ DUOFLEX
OWNER'S MANUAL**

MODEL 822

Welcome to the Flyer™ Fleet

Congratulations on your new Flyer™ DuoFlex bike trailer!

The Flyer™ line delivers a high-performance experience for riders of all ages, ranging from micromobility solutions for families to premium wheels for kids. As an extension of the Radio Flyer® brand, Flyer™ products are created with the same beautiful design and quality that has inspired our work for over a century. We hope your new bike trailer offers a fun, sustainable, and convenient way to get out and explore your world.

We can't wait to see where your new ride takes you.

Cheers,

The Radio Flyer Team

Time Flies. Enjoy the Ride.®

ABOUT THIS MANUAL

This owner's manual contains details of your Flyer™ DuoFlex including instructions for assembly, operating, and maintenance. To ensure safe use and prevent injury, please carefully read all information in this manual before use. Take time to familiarize yourself with your Flyer™ DuoFlex before use.

While this owner's manual is meant to introduce you to your Flyer™ DuoFlex, it is impossible to guide owners on every possible scenario when using a bike trailer. There are inherent risks using any bike trailer and it is the owner's sole responsibility to ensure safe riding. Always take responsibility for you and your child's own safety.

Please keep this manual for future reference. If you have any questions about your product, contact the Radio Flyer Customer Service Team. Our award-winning service team is committed to providing you with world class support, right from Chicago.

Phone: 1-800-621-7613

Email: customerservice@radioflyer.com

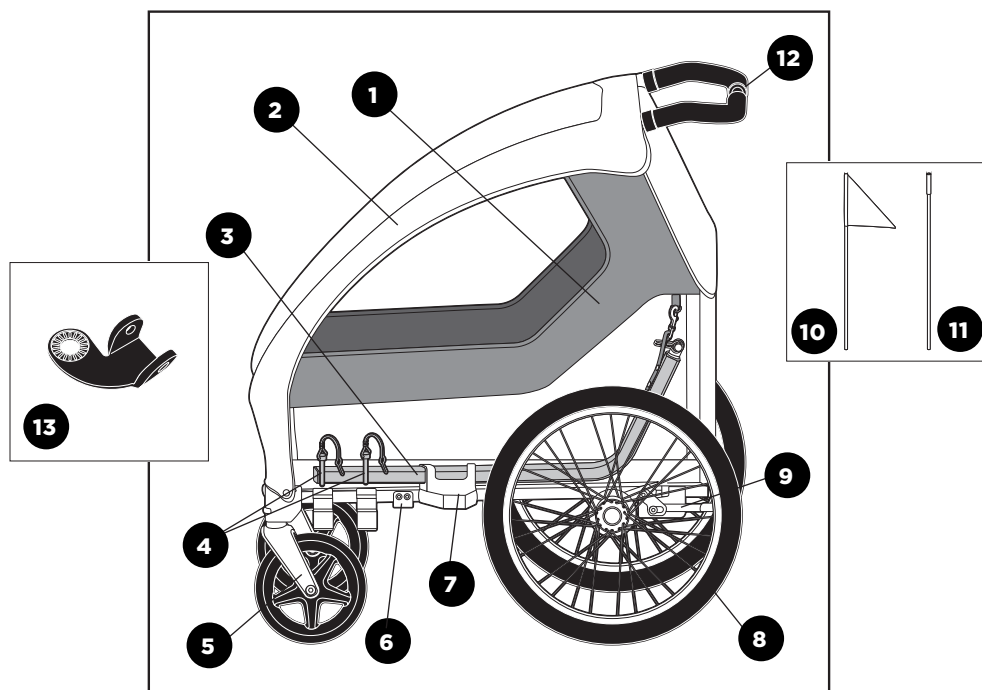
Customer Service Hours: 8am - 5pm CST, Monday through Friday

Flyer™ Service Website: flyer.radioflyer.com/customer-service

TABLE OF CONTENTS

Component Guide	6
Important Safety Instructions	7
Important Notes for Trailering	8
Getting Started	9
Assembly Instructions	9
Folding the Trailer	15
Installing the Tow Arm	16
Connecting to the Bike	17
Rear Brakes	18
Securing Your Child	18
Converting to Stroller Mode	19
Ride Safety Checklist	20
Maintenance	21
Warranty	21

Component Guide



- | | |
|-------------------|--------------------------|
| 1. Frame Assembly | 8. Rear Wheel |
| 2. Upper Cover | 9. Rear Brake |
| 3. Tow Arm | 10. Flagpole Upper |
| 4. Retention Pins | 11. Flagpole Lower |
| 5. Front Caster | 12. Push Bar |
| 6. Fold Lock | 13. Bike Coupler Bracket |
| 7. Wheel Guard | |

Important Safety Instructions

SAFETY WARNINGS

⚠ WARNING! When using this product, basic precautions should always be followed including the following:

- Never leave the child unattended.
- This product is not suitable for children under 12 months.
- Only use the trailer with children who can support their head while wearing a helmet and sit upright without physical support.
- Each child must wear a helmet that complies with 16 CFR 1512.
- Do not modify trailer. Hanging bags or other items from the handlebar may cause the trailer to become unstable.
- Children must keep arms and legs inside the trailer at all times. Avoid wearing loose clothing (baggy sleeves, untied shoelaces, etc.) while in the trailer.
- Surface wash fabric with warm water and mild soap. Do not use cleaning solvents or bleach. Do not machine wash fabric.
- Allow more time for braking, slowing, stopping, and starting. The trailer is wider than your bike. Allow more room for turns and passageways. Do not turn sharply.
- Before each ride ensure that the attached trailer does not interfere with the bicycle's braking, pedaling, or steering.
- Consult instruction manual on how to properly attach trailer to the bicycle.
- Do not use the bike trailer at night or during inclement weather where visibility is reduced. Do not install a car seat or any other seating device not approved by the manufacturer inside the trailer.
- Check children frequently, especially during hot or cold weather.
- Instruct children not to bounce or lean, as a weight shift could cause the trailer to tip over.
- This product is not intended for sleep or laying down. Do not use product as a carriage or bassinet.

Maximum Load: One or two children + cargo should not exceed maximum weight of 100.0 lb (45.4 kg) or product may become unstable.

Maximum Weight of Child: 40 lb (18 kg)

Maximum Speed: Flat, smooth roads: 15 mph (24 km/h)

Bumpy roads, turns: 5 mph (8 km/h)

Tire Pressure: 40 - 50psi (2.75 - 3.5 bar)

- Failure to comply with manufacturer's instructions can lead to serious injury or death of passenger/rider.

SAVE THESE INSTRUCTIONS

Important Notes for Trailering

- It is recommended that a qualified bike mechanic does a safety check of the towing bicycle before attaching trailer.
- Before each ride, be sure the trailer does not interfere with the braking, pedaling, or steering of the bicycle.
- It is recommended that a rearview mirror be used on the bike.
- Always comply with local requirements for lighting.
- All reflectors on the trailer must remain attached and visible at all times.
- If coming to a stop for any reason, pull off the road completely.
- Experiment with the loaded trailer in an uncongested area until you become familiar with how your bike handles towing a trailer.
- Avoid rocks, curbs, hard braking and sudden swerving. Avoid riding over obstacles with one wheel, as this may cause the trailer to tip over.
- Always ride with the upper cover down to protect children from flying debris.
- Unfold and lock trailer in riding position before use.
- The rider of the bicycle must be at least 16 years old.
- Bicycle trailers pulled by an Electric Powered Assist Cycle (EPAC) can be restricted by law.
- Trailer weight must be properly distributed for safe handling. The downward force at the end of the tow bar, where it meets the bike, should be between 2 lbs and 20 lbs (1 and 9 kg). To measure this, load your trailer and place next to a bathroom scale. Step on scale and note your weight. While on scale, lift the end of the towbar 1 foot (30 cm) off the ground and note the new weight. The weight difference is the downward force on the tow bar. If the weight is too low, the rear wheel of the bicycle could lose traction. If it is too high the hitch may be overloaded.

Getting Started

ASSEMBLY INSTRUCTIONS

The following steps provide a general overview of the assembly process for your bike trailer.

Visit flyer.radioflyer.com or contact customerservice@radioflyer.com for additional assistance assembling, using, repairing or maintaining your bike trailer.



⚠ WARNING! Incorrect assembly, maintenance, or use of your Flyer™ DuoFlex can cause component failure, loss of control, serious injury, or death.

The following items are required for assembly:

- Scissors or flat-sided cutters
- Phillips screwdriver

Step 1: Unpack your bike trailer

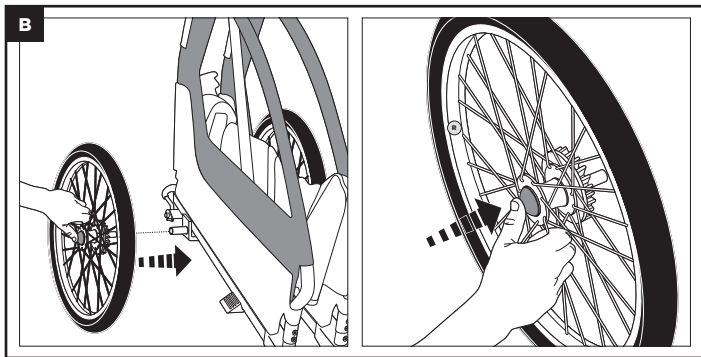
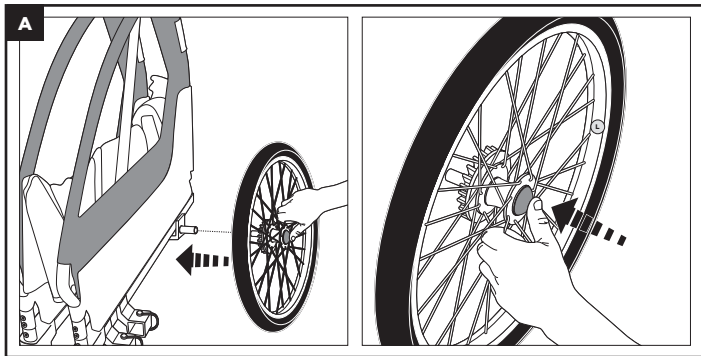
Remove the bike trailer from the outer carton and set it on a flat, clean surface. Place the frame assembly upright. Remove all protective packaging material and carefully cut all zip-ties. Do not use scissors or knives to remove tape. Verify that you have all the components listed below. Contact Radio Flyer Customer Service if any components are missing.

- Frame Assembly
- Rear Wheels (x2)
- Push Bar
- Tow Arm
- Wheel Guard Left
- Wheel Guard Right
- Upper Cover
- Front Casters (x2)
- Bike Coupler Bracket
- Flagpole Lower
- Flagpole Upper
- M5 x 35mm Screws (x4)

Step 2: Install the rear wheels

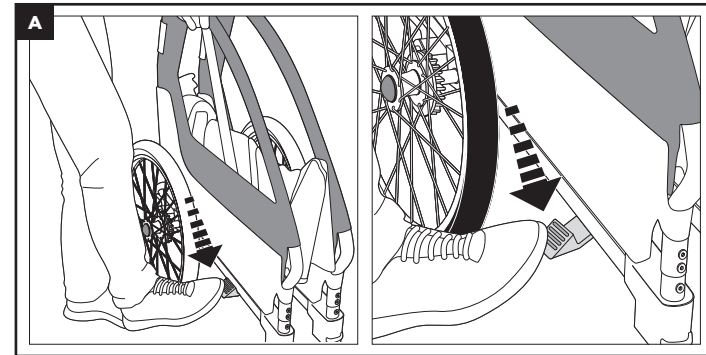
- A. Lean the frame assembly to the side and insert the left rear wheel axle into the frame while pushing the red center button with your thumb. Release the center button.
- B. Lean the frame assembly in the opposite direction and insert the right rear wheel into the frame while pushing the red center button with your thumb. Release the center button. Remove "R" and "L" stickers from wheels and frame after assembly.

Note: After installing, pull firmly on each wheel to ensure that the axle is fully engaged. Repeat this check each time you use the bike trailer.

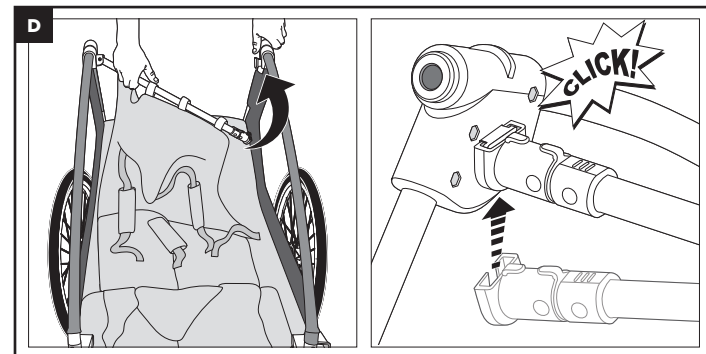
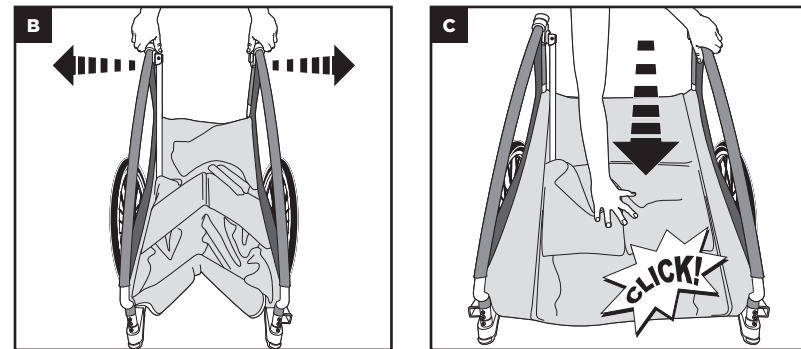


Step 3: Unfold the trailer

- A. Stand on the right side of the folded trailer. While holding the sides of the frame in each hand, step on the red fold lock until it releases.
- B. Once the lock is released, lift up the trailer and extend each wall of the trailer outward until the trailer is fully unfolded.
- C. Next, push down on the floor of the trailer until you hear a click.
- D. Pull up on the crossbar and engage the lock on the left side. You will hear a click when the crossbar is engaged.

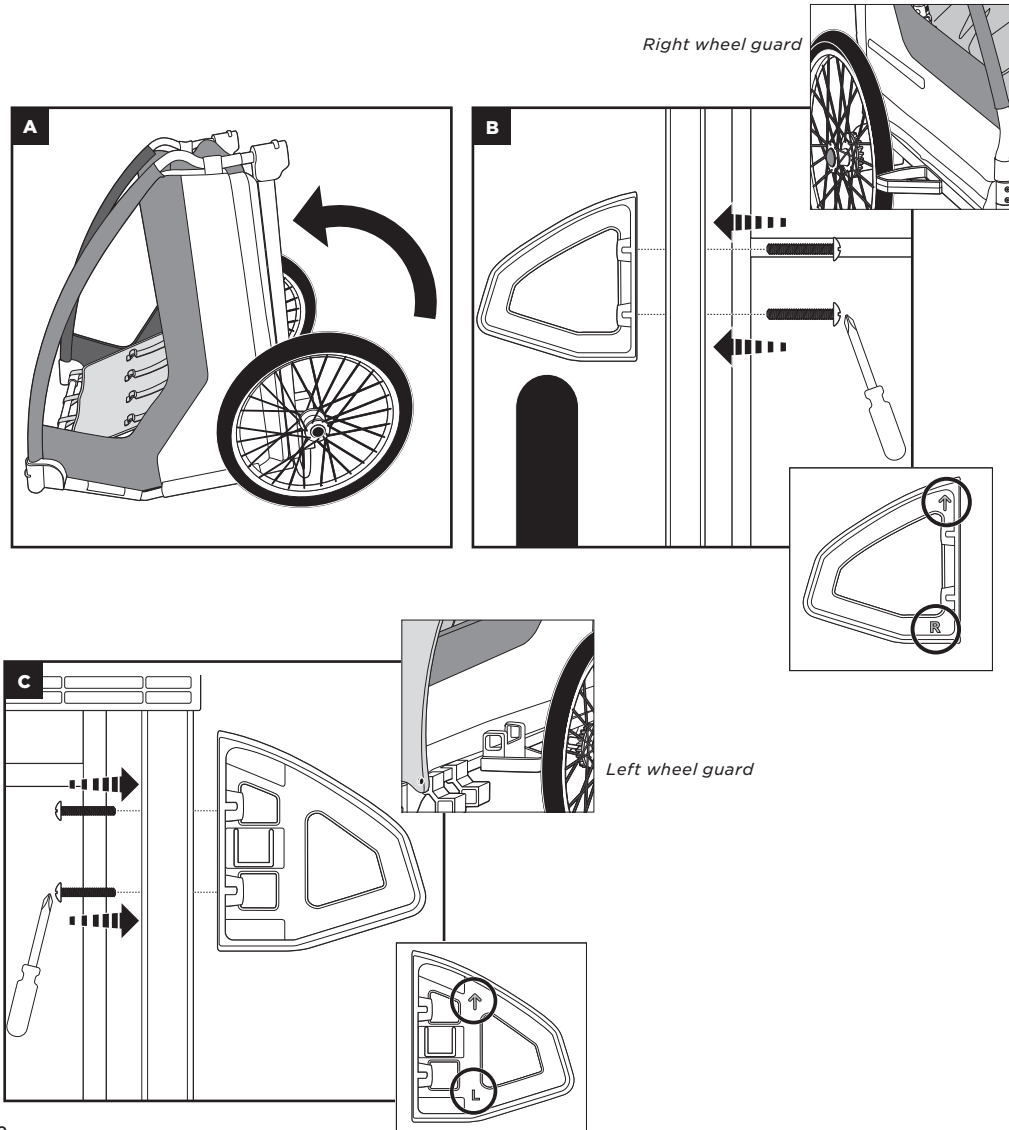


⚠ WARNING! Always take care when folding and unfolding the product to prevent finger entrapment. Only adults should fold and unfold the trailer.



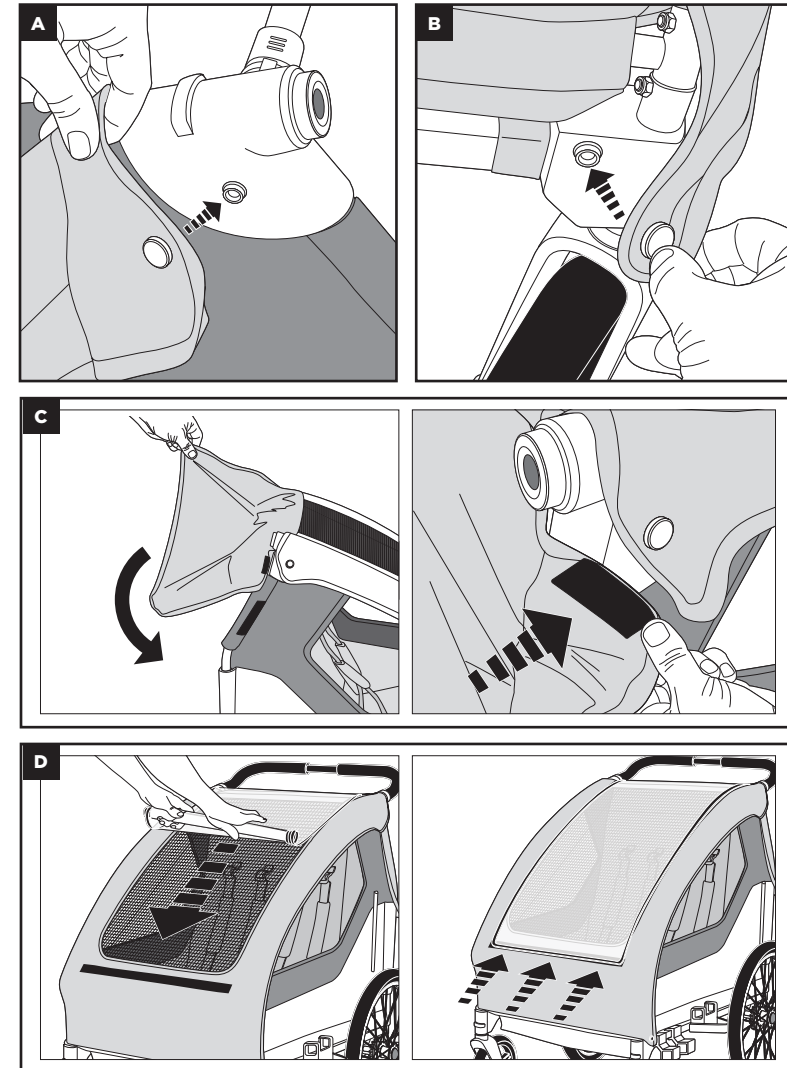
Step 4: Install wheel guards

- A. Tip the trailer on its back.
- B. Locate the right wheel guard, which will have an R on the bottom of the part. Orient the arrow on the bottom of the wheel guard to face forward and use 2 M5 x 35mm screws to secure the wheel guard to the frame with a Phillips head screwdriver.
- C. Locate the left wheel guard, which will have an L on the bottom of the part. Orient the arrow on the bottom of the wheel guard to face forward and use 2 M5 x 35mm screws to secure the wheel guard to the frame with a Phillips head screwdriver.



Step 5: Install upper cover

- A. Button the top corners of the upper cover to the frame just above the windows.
- B. Drape the cover over the side walls and button the lower flaps to the front corners of the frame.
- C. Secure the rear portion of the cover to the back of the frame and connect the corner flaps to one another around the plastic corner housings.
- D. Deploy weather guard by opening the upper storage pouch, unrolling the weather guard, and securing to the lower section of the upper cover.

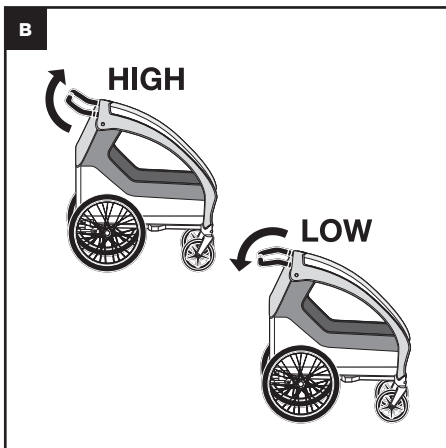
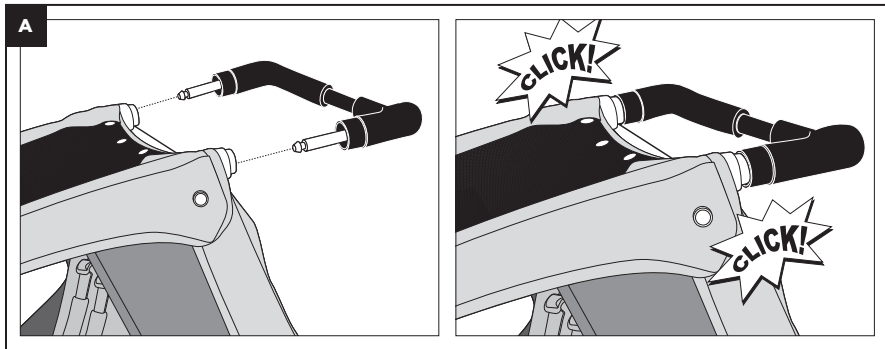


Step 6: Install the push bar

- From behind the trailer, insert the pins on the push bar into the respective holes in the frame. Hold the frame steady with one hand and push the bar into the frame until both sides lock.
- The push bar has 2 positions. Install the push bar angled upwards for a taller handle height. Install the push bar angled downward for a shorter handle height.

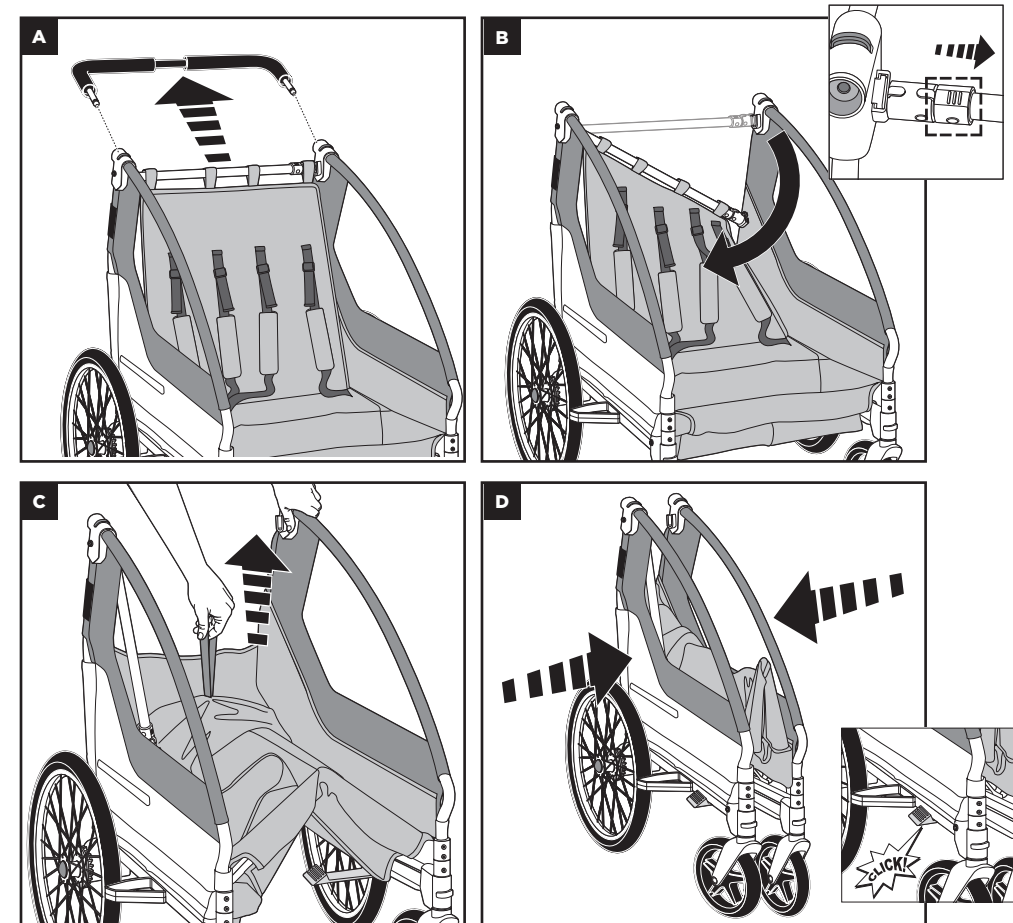
Note: Install the push bar when using product in either trailer or stroller mode. Always remove the push bar before attempting to fold the trailer.

⚠ WARNING! Ensure the push bar retention features are secure before every use. Do not use the trailer to transport a child on stairs or ramps. Do not use push bar to lift or carry the trailer.



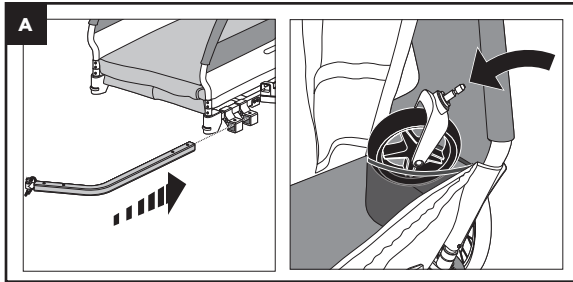
FOLDING THE TRAILER

- Push the red release buttons and remove the push bar from the trailer.
Note: Always remove push bar prior to folding.
- Pull the plastic release collar to the right and rotate the crossbar all the way down until it is against the right side of the trailer.
- Pull up on the red strap in the rear cargo area to begin the fold.
- Tilt the trailer to one side and squeeze low on the walls of the frame until the red fold lock engages underneath the trailer.

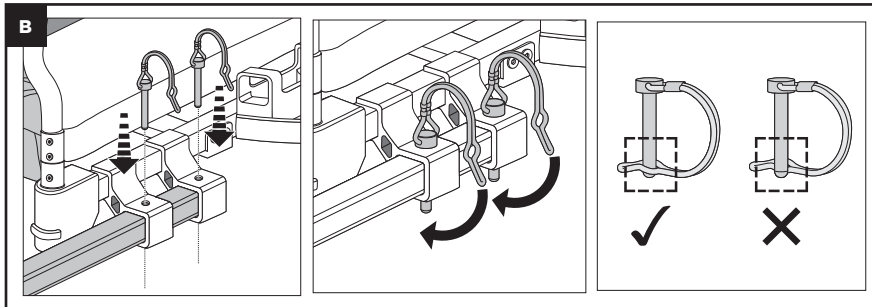


INSTALLING THE TOW ARM

- Slide the tow arm into the brackets on the left side of the trailer. Align both holes of the tow arm with the holes on the frame brackets. Remove the front casters and stow in the mesh pockets behind the seatback while in trailer mode.
- Insert both retaining pins through the bracket and tow arm, and lock the retainers as shown.



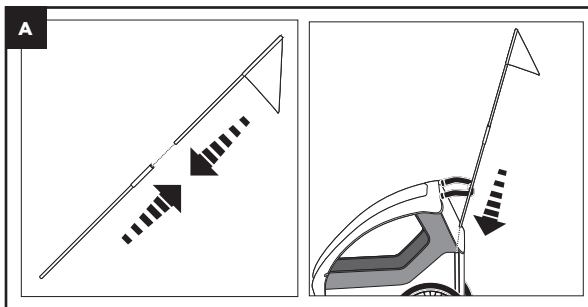
⚠ WARNING! Always remove front casters before towing trailer behind a bike.



INSTALLING THE SAFETY FLAG

- Connect the upper and lower parts of the flagpole, and insert the pole into the sleeve on the left side of the trailer. Slide the flag all the way down into the sleeve.

⚠ WARNING! Always install the flag when towing behind a bike.

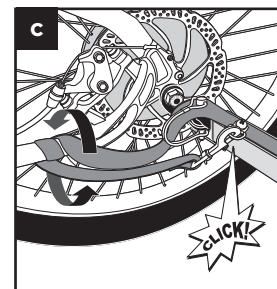
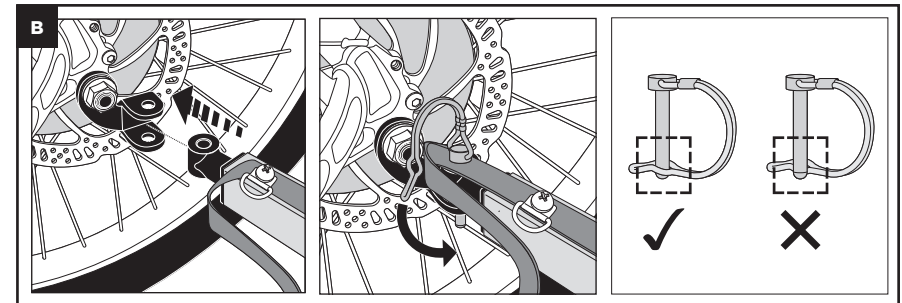
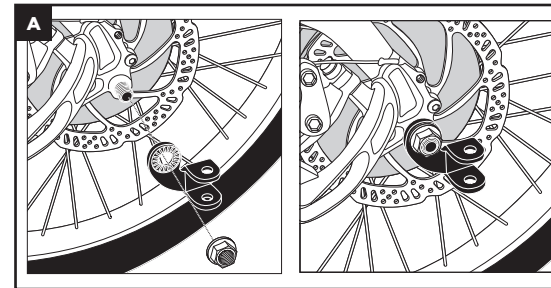


CONNECTING TO THE BIKE

- Remove the quick release skewer or nut from the left side of the bike's rear axle. Install the bike coupler bracket to the axle. Reinstall the skewer or nut to the bike, and tighten following the bike manufacturer's recommendation.
Note: The bike coupler bracket can be left on the bike when the trailer is disconnected.
- Insert the flexible end of the tow bar into the bike coupler bracket and align all holes. Then insert the pin and secure the retainer correctly as shown.

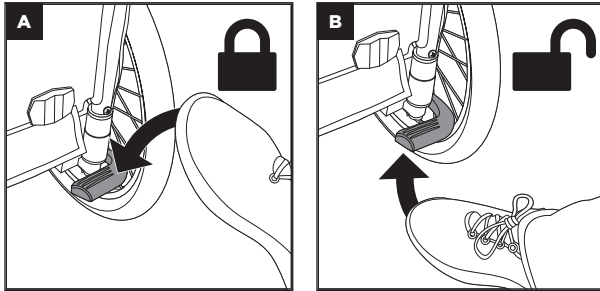
⚠ WARNING! Align the retainer on the pin away from the bike to avoid contact with the wheel or other moving components.

- Wrap the safety tether around the bike frame twice, and secure the clip to the D-ring on the tow bar.



USING THE REAR BRAKES

- Push down on the red pedal to lock the rear brake.
- Lift up on the rear pedal to release the brake.

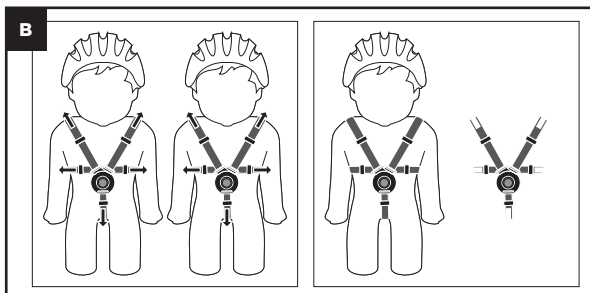
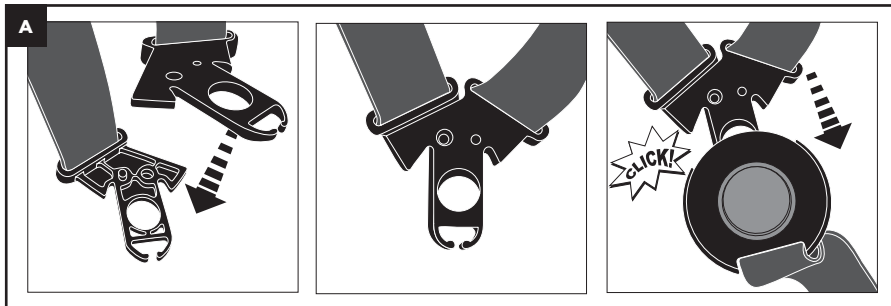


Note: Each rear wheel has an independent brake.

SECURING YOUR CHILD

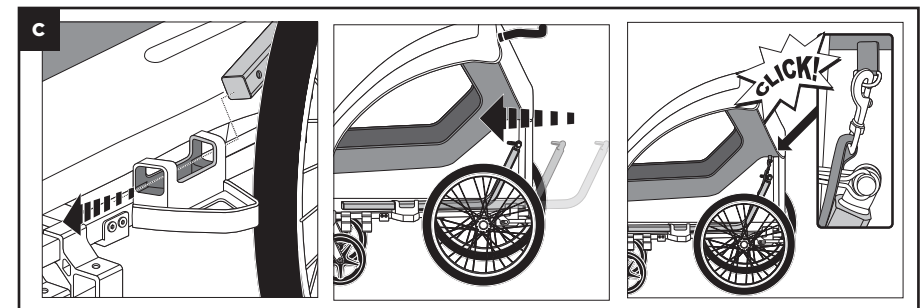
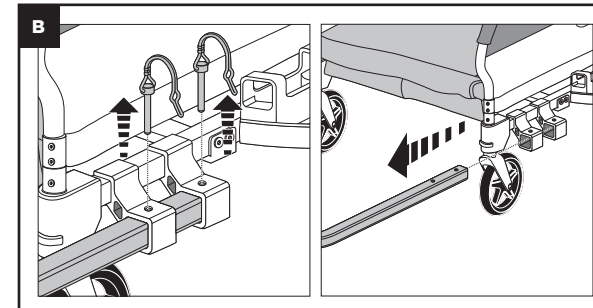
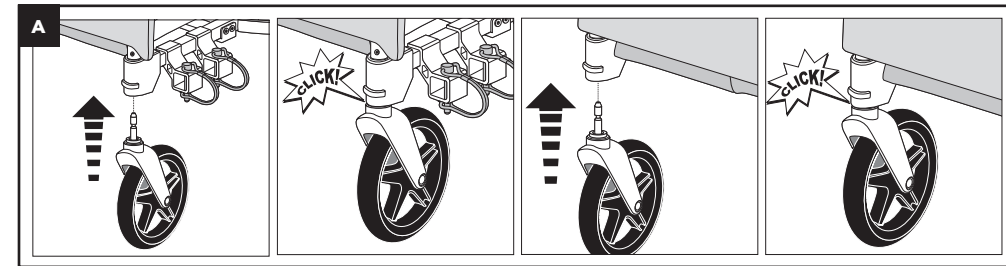
- Before loading or unloading children, set each of the rear brakes. After loading the children into the trailer, route each child's arms through the gaps between the waist and shoulder sections of the seatbelt straps. Overlap the buckles of each upper strap and insert them simultaneously into the lower buckle.
- Fasten and adjust the seatbelts to fit securely. When using the trailer with one child, always seat the child in the right side position.

⚠ WARNING! Avoid serious injury from falling or sliding out. Always use 5-point harness. Each child must wear a helmet that complies with 16 CFR 1512. No more than 2 riders at a time.



CONVERTING TO STROLLER MODE


- Insert the stem of the front caster into the front frame tube until the lock feature engages. Repeat this step for the remaining caster. Pull down on each caster to check that the lock engaged correctly.
- Remove the retention pins from the tow bar and slide the tow bar out of the mounting brackets.
- Insert the tow arm into the back of the holder, which is integrated in the wheel guard. Slide it forward and clip the tether strap to the D-ring on the fabric body.



Ride Safety Checklist

Check before each use:

- Wheels are properly secured to trailer.
- Rear tires are inflated to recommended pressure on the tire sidewall.
- Tow bar is properly secured to trailer with both retention pins.
- Coupler bracket is properly secured to the bicycle.
- Coupler retention pin is secured, safety strap is attached, and pin retainer is facing away from the bike.
- Load does not exceed 100lb (45 kg).
- Weight of the tow bar at coupler is greater than 2 lb (1 kg) but does not exceed 20 lbs (9 kg) with fully loaded trailer.
- Bicycle is in proper working order, especially brakes and tires (refer to bicycle manufacturer's instructions).
- Each passenger is wearing a helmet.
- Safety flag is installed.
- Child(ren) are properly secured with 5 point harness.
- Upper cover is installed and closed.
- Lighting is adequate for riding conditions.
- Push bar is installed.

 **WARNING!** Do not use the product if there are any damaged or missing parts.

Check Monthly:

- Inspect tow bar, coupler bracket, frame tubing, flexible tow bar connector, and hardware for damage.
- Flexible tow bar connectors need to be serviced every 3-5 years for safe operation.
- Check that bolts are tight.
- Inspect tires and wheels for wear, cracks and trueness.
- Inspect fabric parts for rips, abrasions, and missing or damaged hardware.

Contact Radio Flyer Customer Service for replacement of any damaged or worn parts.

Maintaining your DuoFlex

Storage

For longer product life, store trailer indoors. The trailer should not be stored at temperatures less than -10 degrees F (-23 degrees C) or greater than 150 degrees F (65 degrees C). Ensure trailer is completely dry before storing. Tires should not be stored in contact with windows as window discoloration may result. Avoid resting objects on the windows when stored to prevent warping or tearing.

Fabric Care

Hand wash fabric parts with warm water and mild soap. DO NOT use bleach or solvents. Hang dry upper cover. Wipe dry and store out of direct sunlight in a dry, well-ventilated area. Clean windows with a damp, soft cloth.

Warranty

For information on your product's warranty please visit:



