

# **#908 Charger Port Replacement**

- Flathead Screwdriver
- Phillips Head Screwdriver



**Use a flathead screwdriver or a coin to turn the seat lock to the unlocked position.**

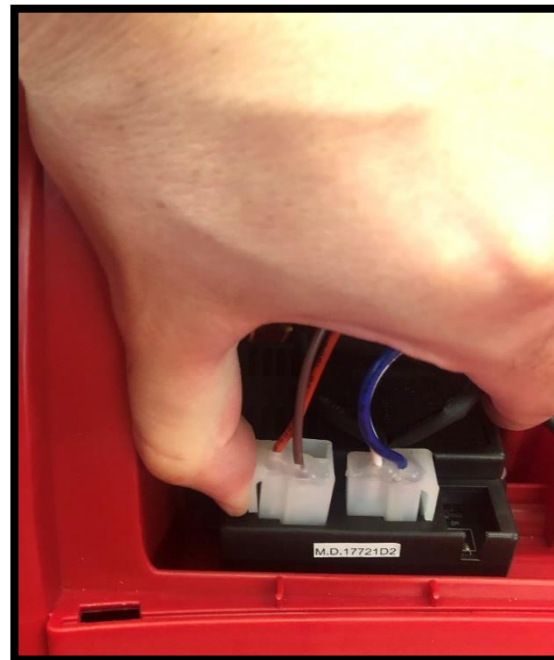
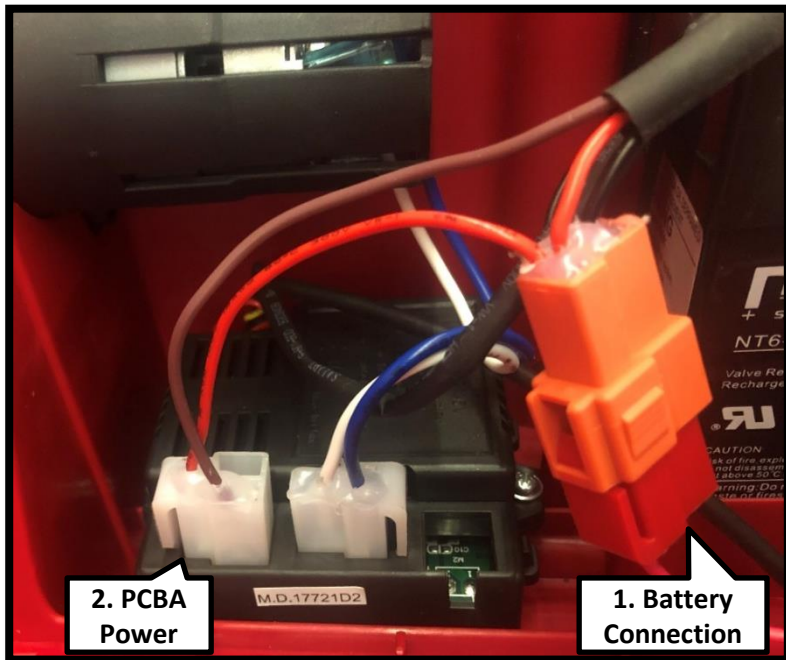


**Remove the seat from the vehicle by pulling upward. This will expose the electronics compartment underneath.**



First, unplug the battery connection by pushing down on the lock tab.

Then, unplug the PCBA power from the PCBA.

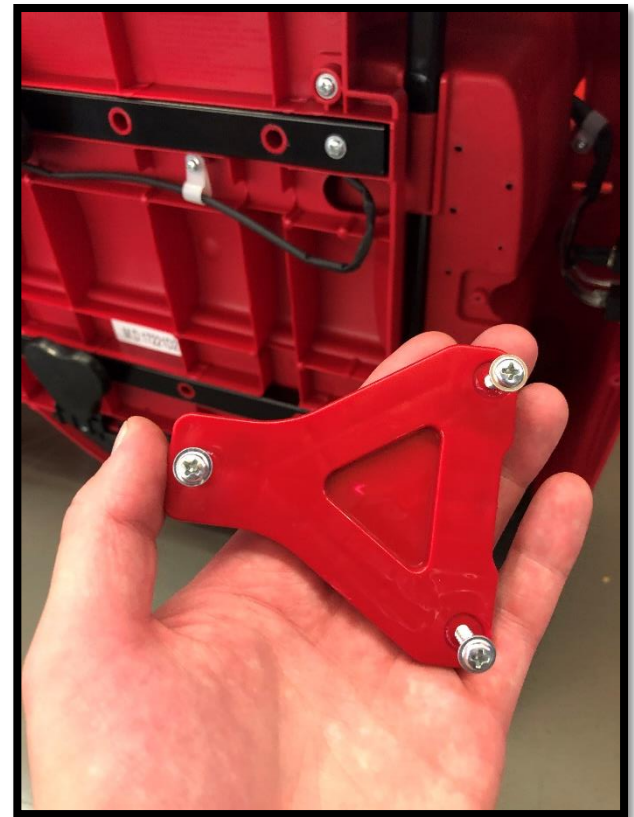
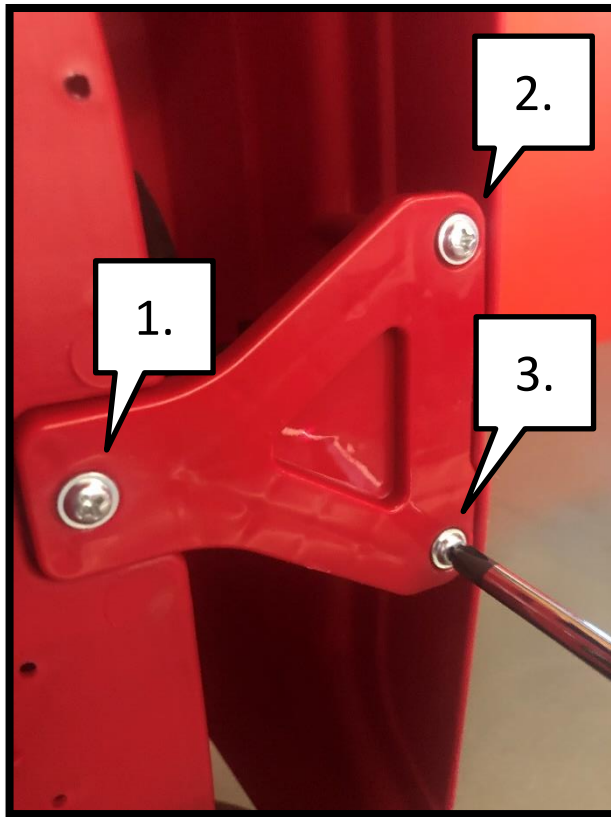


**Turn the vehicle on its side to access the underside of the car.**



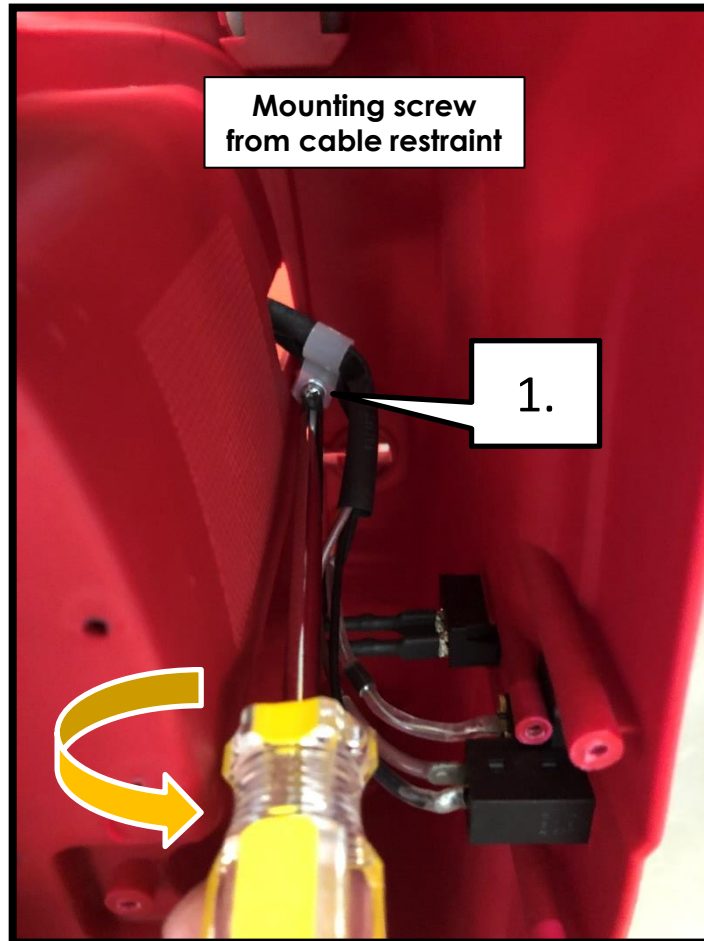
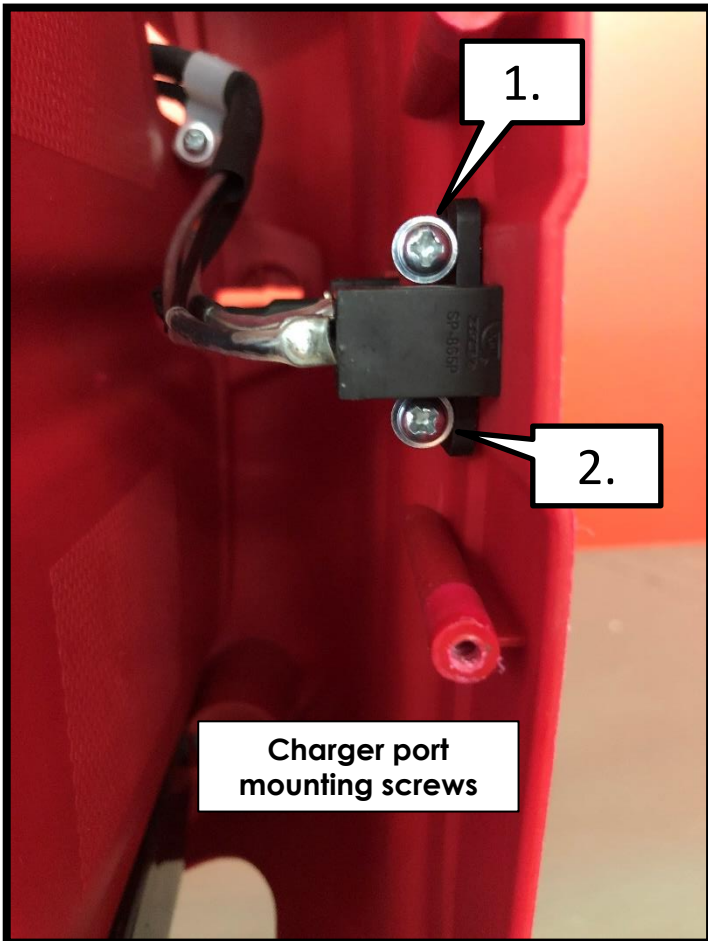
Use a Phillips head screwdriver to remove the 3 mounting screws from the bottom bracket.

Then, remove the bracket from the vehicle.



Use a Phillips head screwdriver to remove the 2 mounting screws from the charger port.

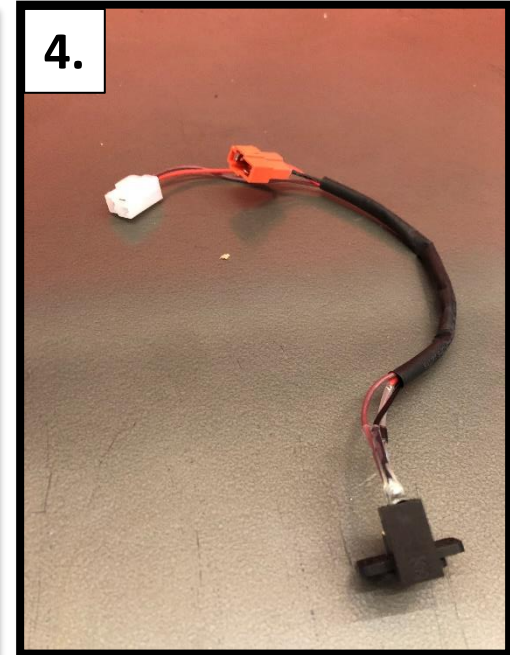
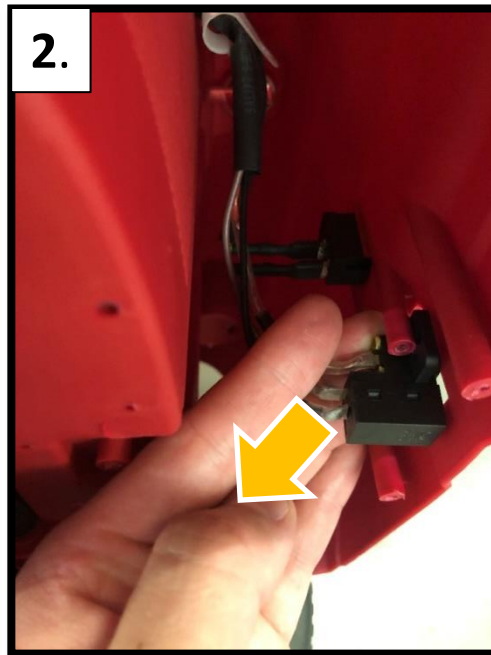
Then, use a Phillips head screwdriver to remove the mounting screw from the cable restraint.



Please note the largest screw is for the bottom bracket, the medium screw is for the port itself and the smallest is for the cable restraint.



1. Remove the charger port by pushing it in from the outside of the vehicle.
2. From the inside, push down on the port and away from the back wall of the vehicle.
- 3/4. You can now remove the charger port from the vehicle.

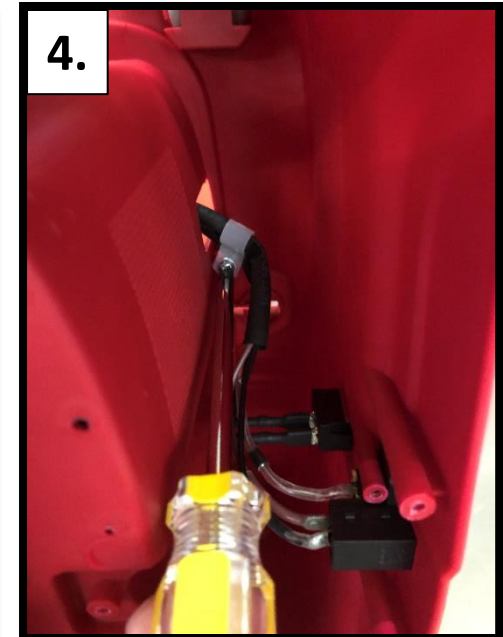
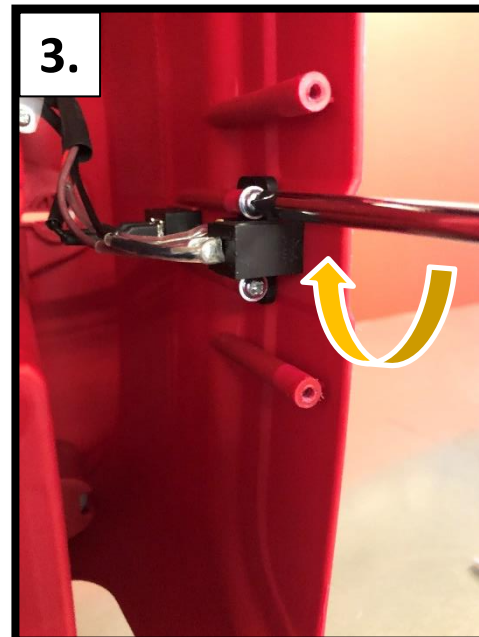
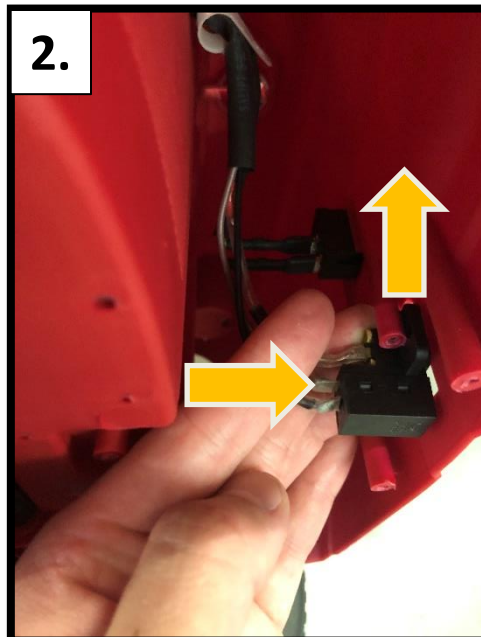
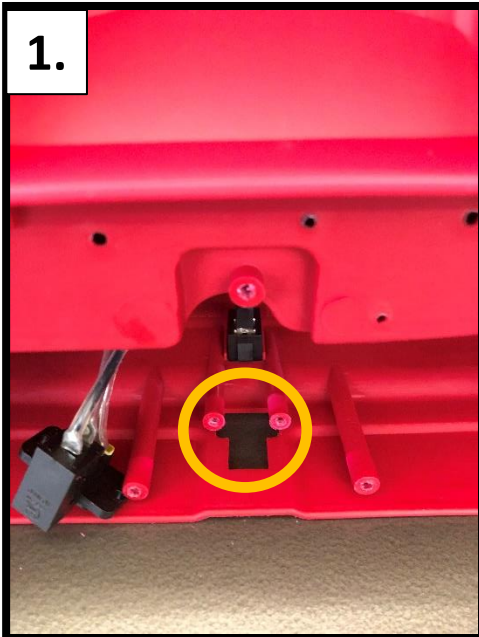


**Feed the end of the charger port cable into the hole in the back of the seat cavity.**

**Insert the charger port cable into the cable restraint.**

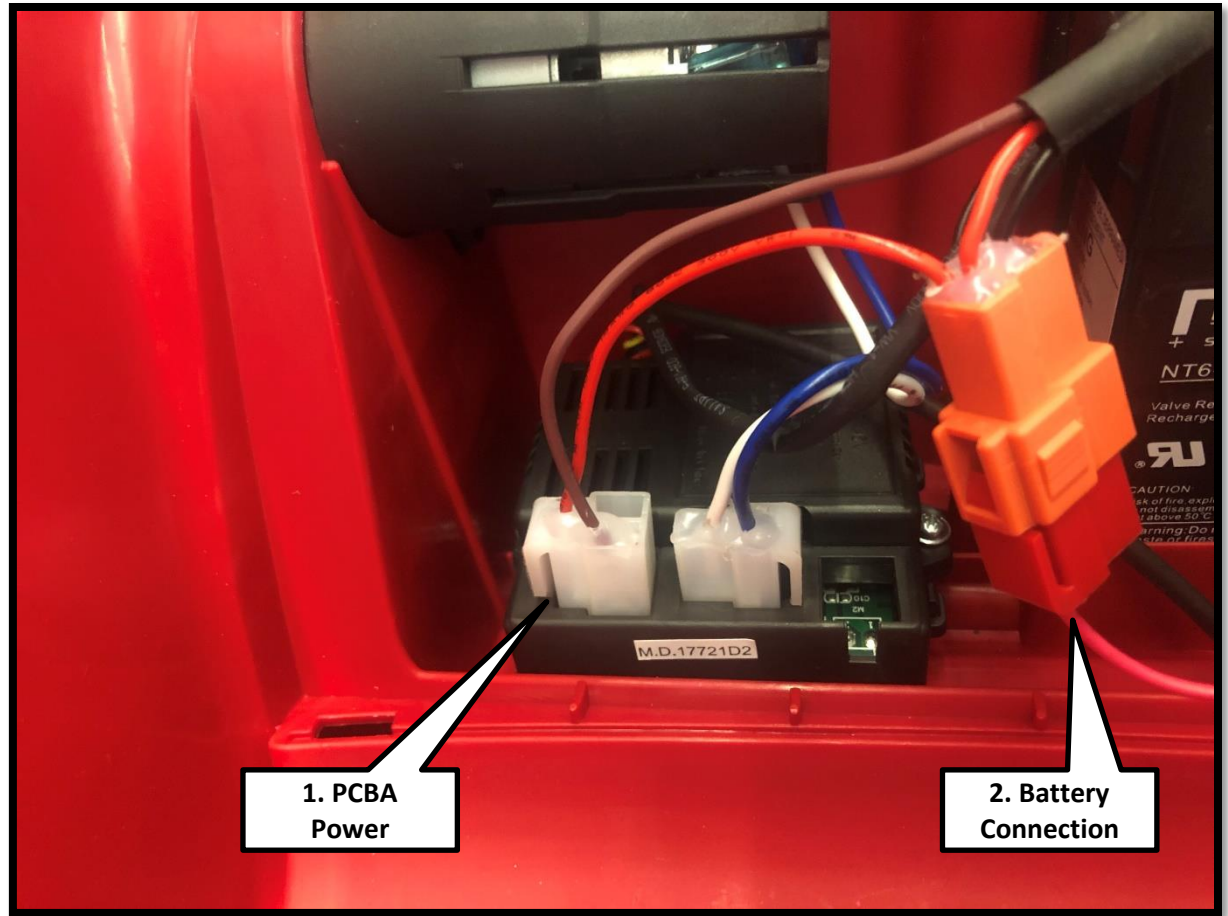
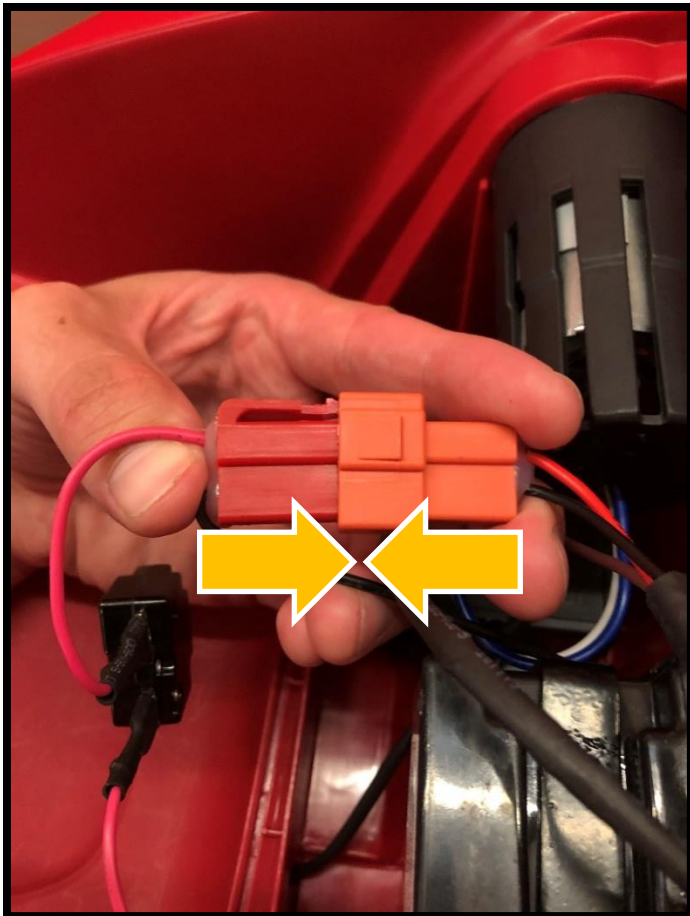


1. Locate cutout for charger port
2. Make sure the side arms of the charger port are seated between the outer wall and the screw bosses when inserting into the cutout. Push the port away from you (into the vehicle) and then out towards the rear wall (arrows are labelled in image below). You should hear the port “click” into place.
3. Screw the new charger port into place.
4. Screw cable restraint back into place.



**Plug in the PCBA power.**

**Then, plug in the battery connection.**



**Place the seat back onto the vehicle. Ensure that it is seated correctly in the seat dropout.**

**Use a flathead screwdriver or a coin to turn the seat lock to the locked position.**



**Now you're ready to ride!**

