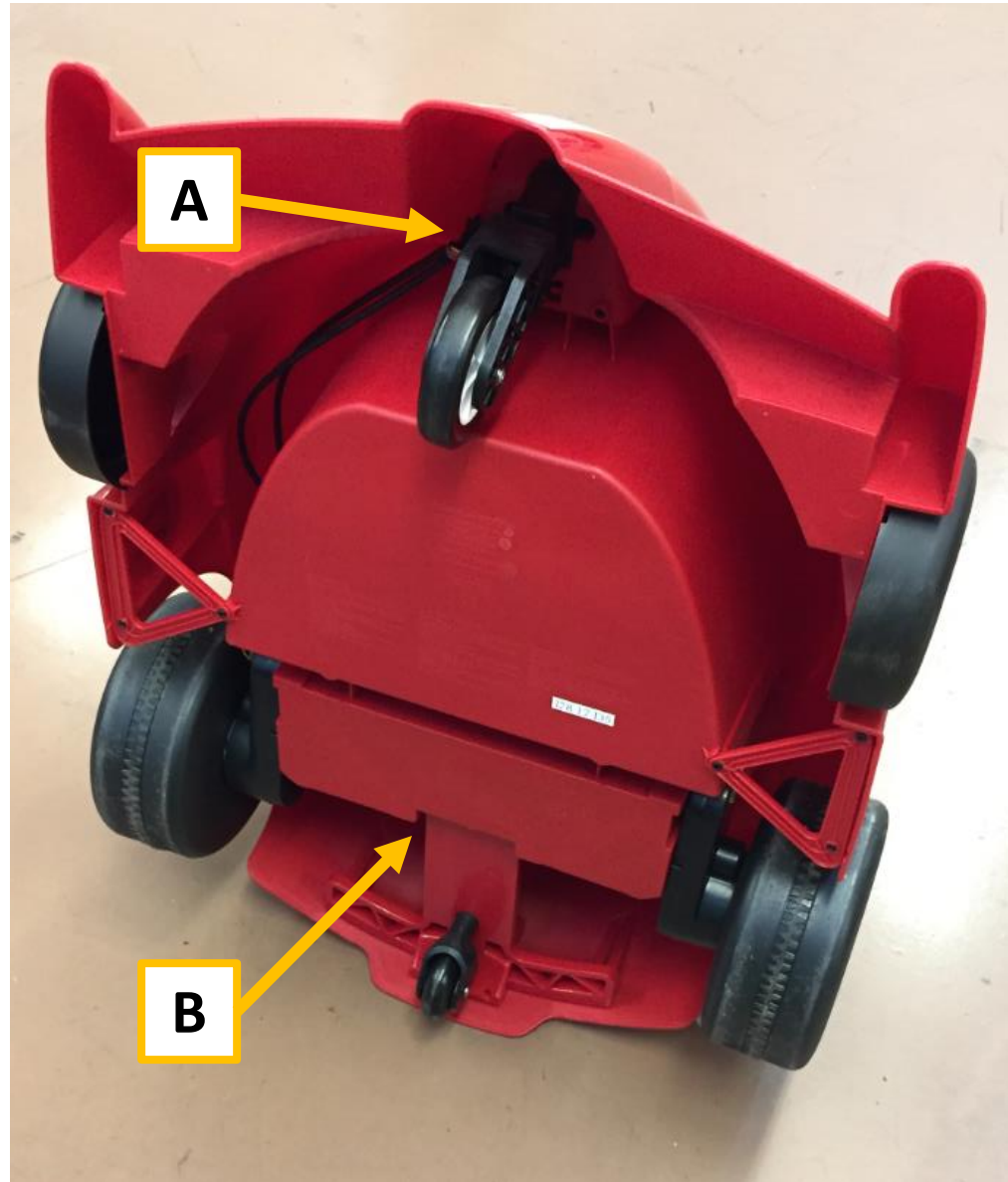


#930 Connector Checks

First, try the following...

1. Make sure both the car and remote are turned on
2. Double-Check the car's mode setting (Child Steering, Override, or Parent RC)
3. Make sure that the car's battery is charged
4. Regardless of control mode, try both the controls on the steering wheel and remote

1. Place your car so it balances on the spoiler and rear bumper
2. Look for the 2 sets of wires near the front caster wheel (Check A)
3. Also locate the connection at the back of the car that goes to the power switch (Check B)



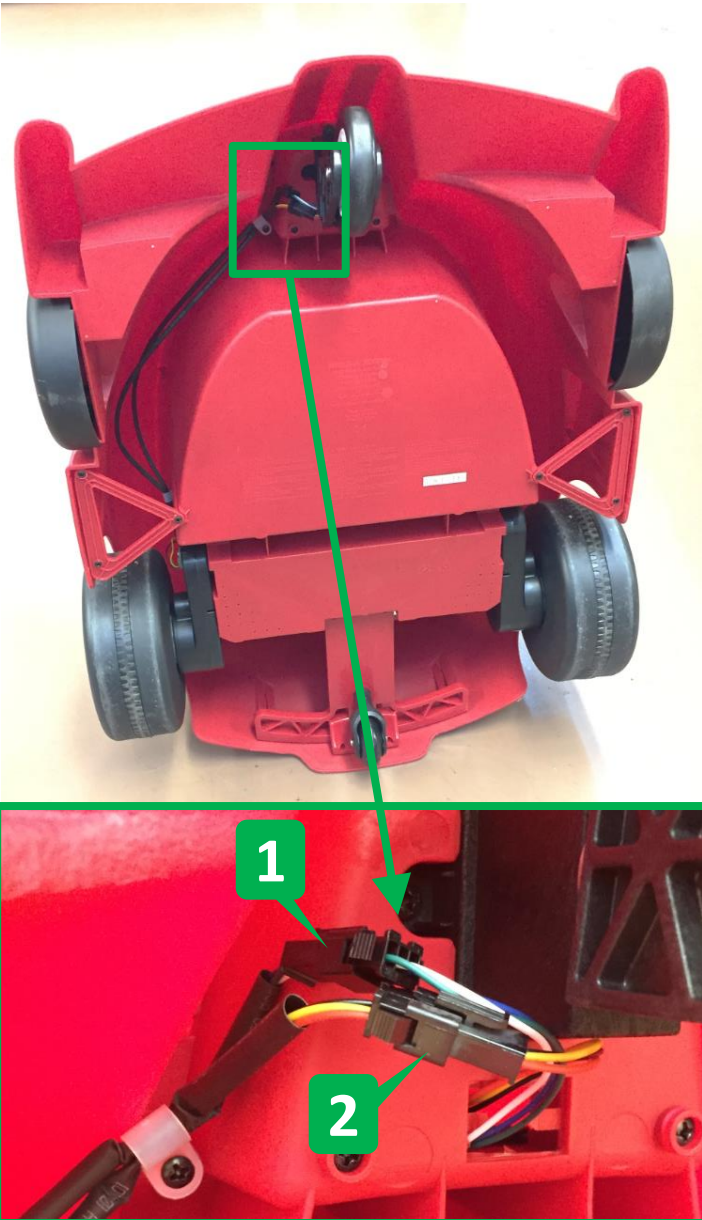
Complete this step if...

The car works when using the remote, but not when using the steering wheel

Skip this step if...

Both go and spin functions on the steering wheel work

1. Put the car in override mode, turn on the remote
2. Press forward on the remote D-Pad, make sure the wheels spin
3. Press the go button, then also try the spin button on the steering wheel
4. Unhook the 2 connectors and reconnect them
5. Retry using steering wheel buttons



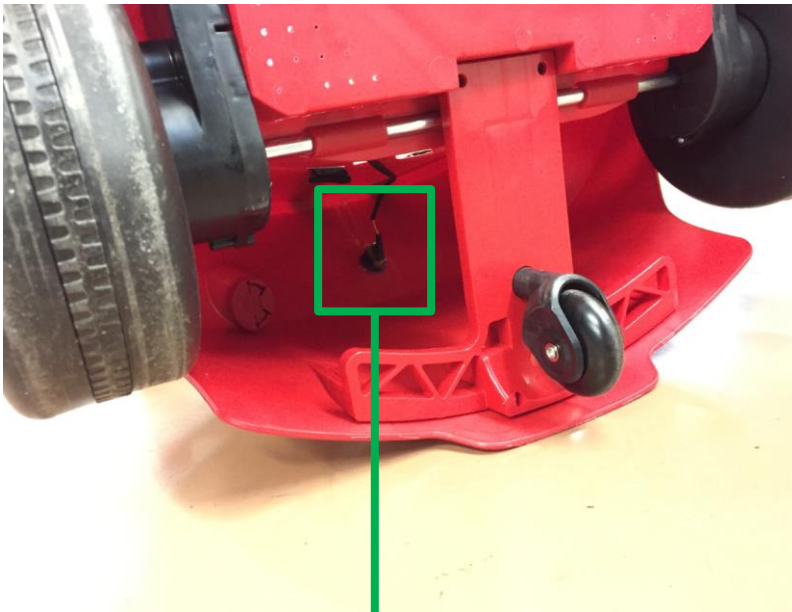
Complete this step if...

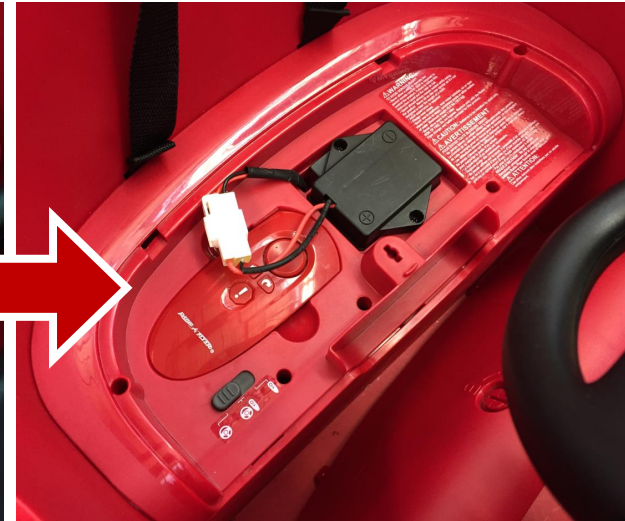
The remote turns on, but the car doesn't function in any mode

Skip this step if...

The car works in any setting

1. With the car in Child Steering mode, try pressing the go and spin buttons
2. Switch the car into RC mode, try pressing any D-Pad direction
3. Flip the power switch on the back of the car to the setting, retry steps 1 & 2





Using a coin, twist the seat lock 90° to unlock it

Pull the seat forward view the battery connector

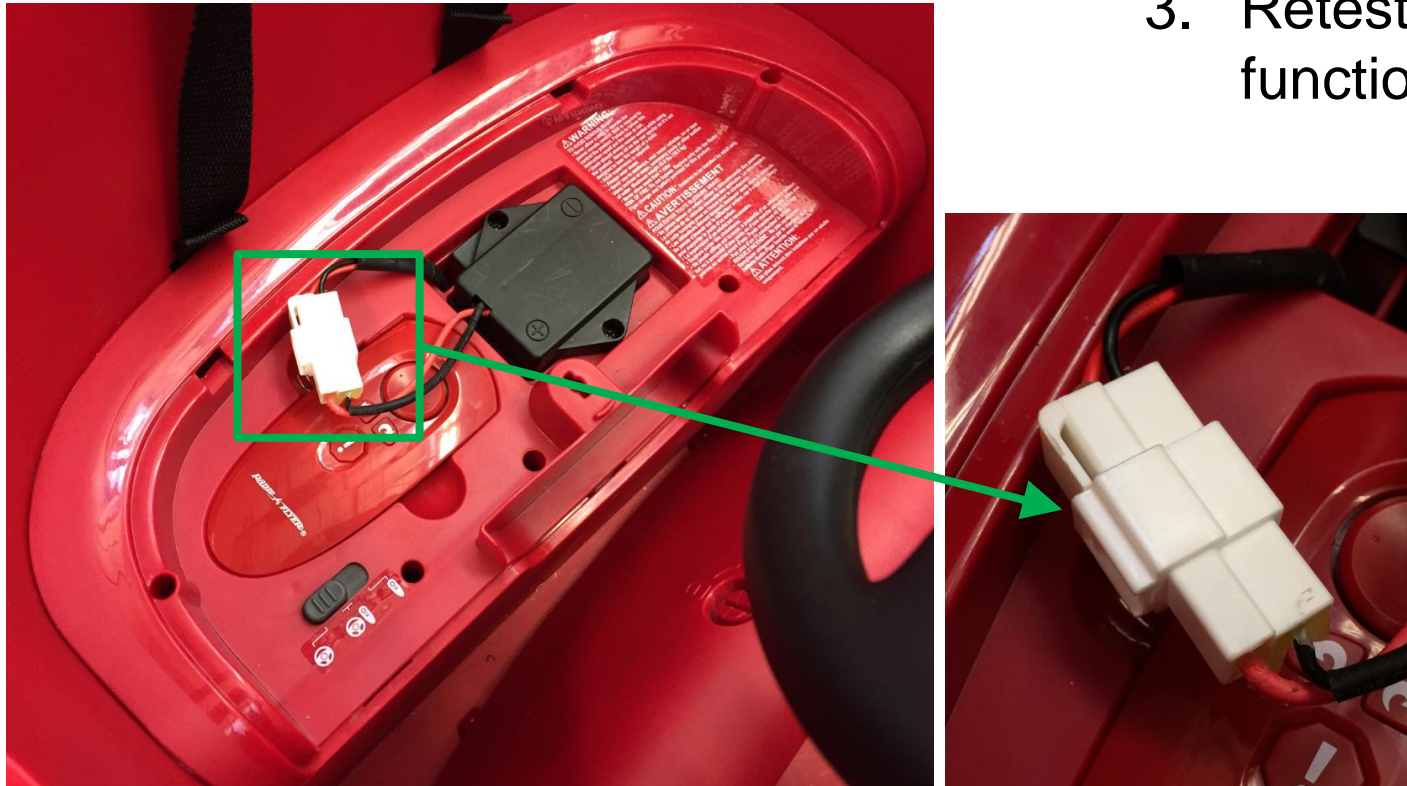
Complete this step if...

There is no function in every setting

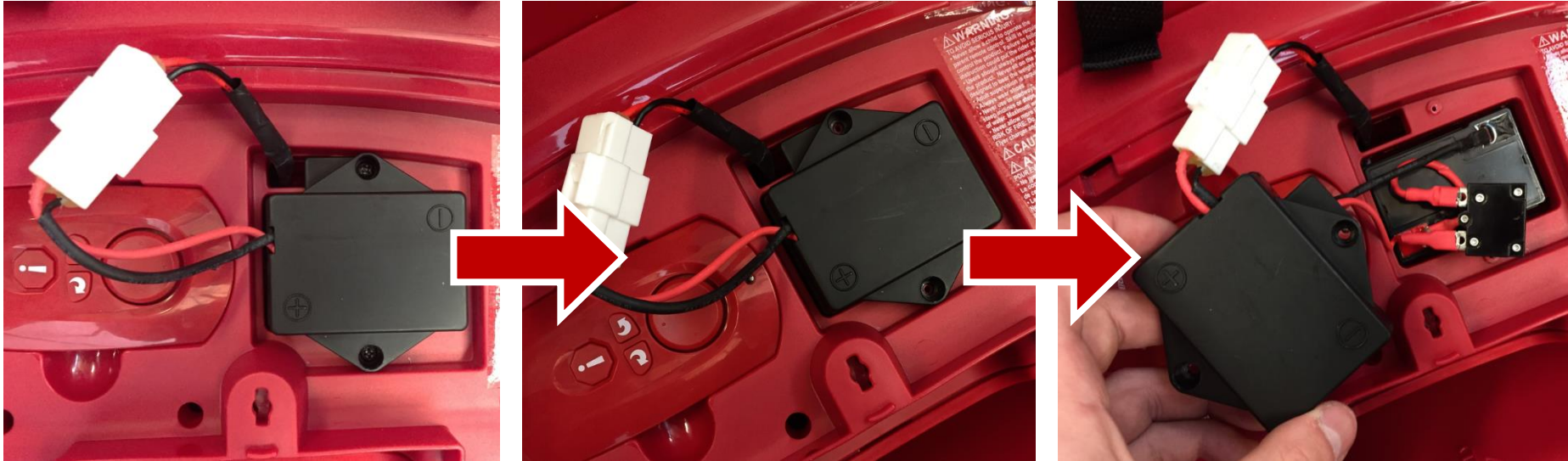
Skip this step if...

The car works in any setting

1. Disconnect and reconnect the wire
2. Look for any exposed metal on the connectors
3. Retest the car's function



Removing the Battery Cap



Remove the 2 screws holding the battery cap in place

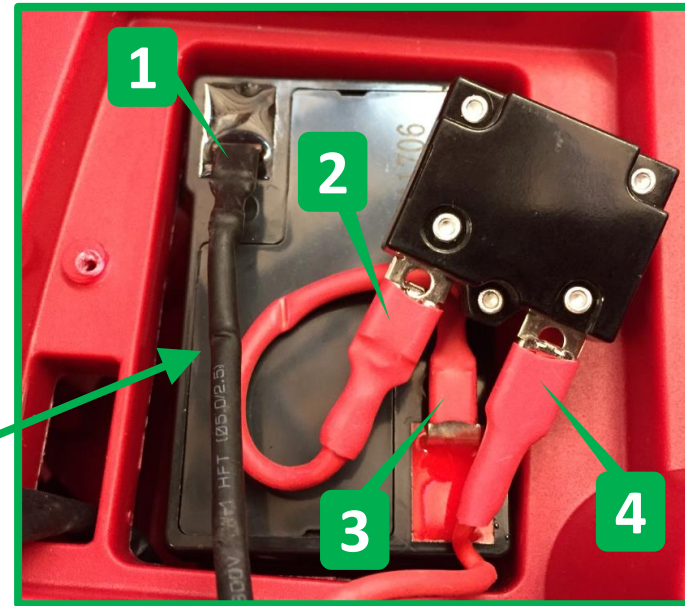
Pull up on the battery cap, slide it down the wires

Complete this step if...

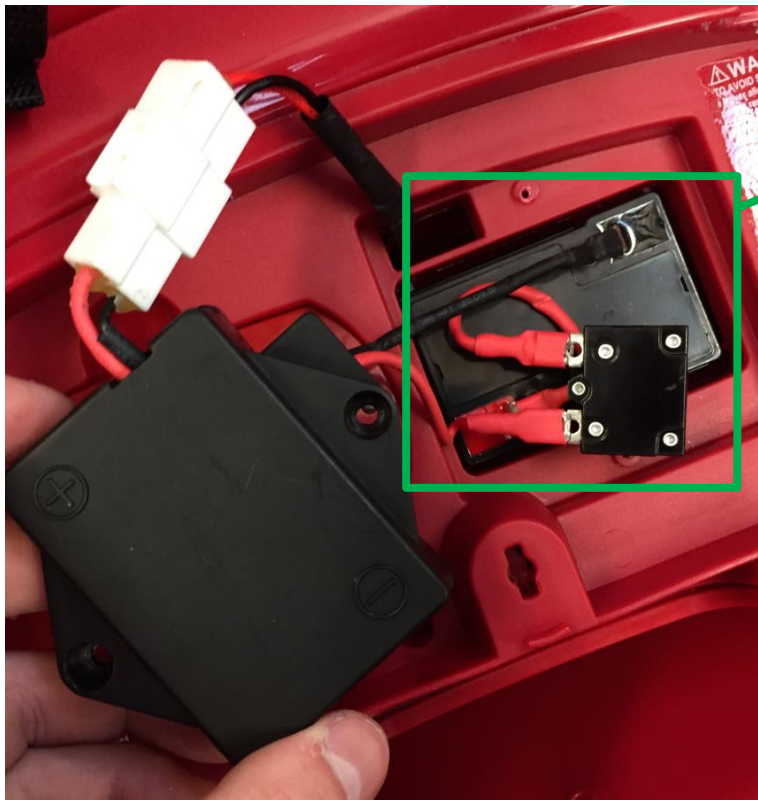
There is no function in every setting

Skip this step if...

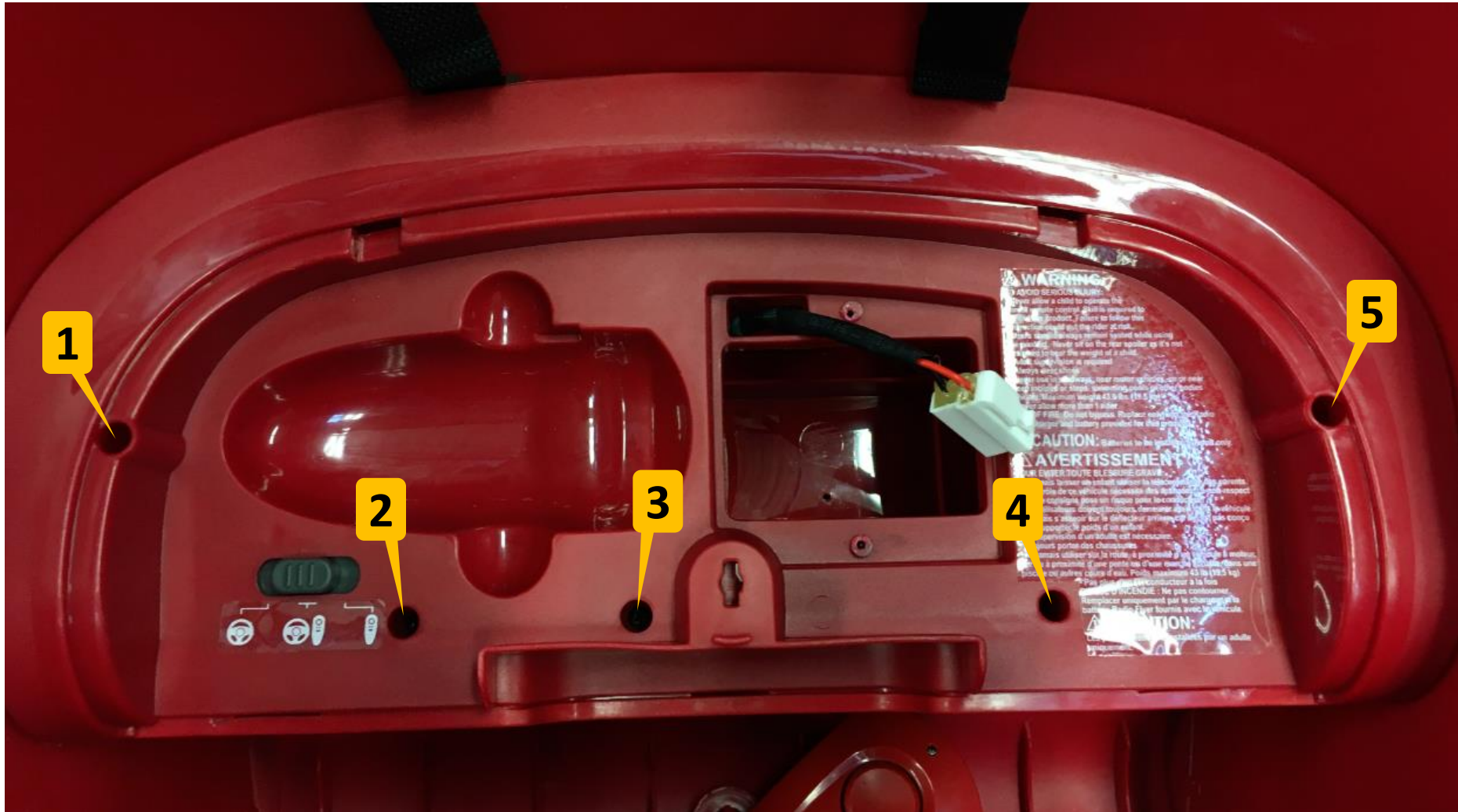
The car works in any setting



1. Examine the 4 points of the connection, look if any are loose
2. If so, press the connector back in place
3. Once reconnected, give the connector a little pull (just a couple pounds force) to make sure the connection is secure



Remove 5 screws from the locations shown below.

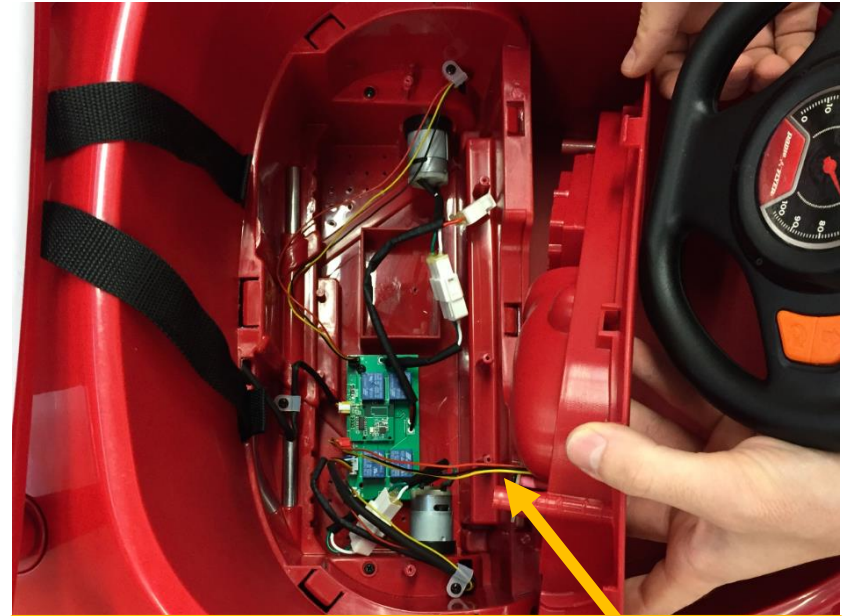


Push the battery connector into the space under the seat.



Remove the seat by pulling up on the hole where the battery was with your right hand. Place your left hand over the mode selection switch. Do not press down with your left hand.

Lift with your right hand, while holding the your left in place.



Carefully lift the seat, there are wires connected to its bottom

This may be difficult as a snap feature at the back of the seat holds it in place, the tray will suddenly pop out of place.

Complete this step if...
No other checks fix the car's function.

1. Examine the 8 connectors indicated
2. Look for any disconnections or exposed metal on any connector

