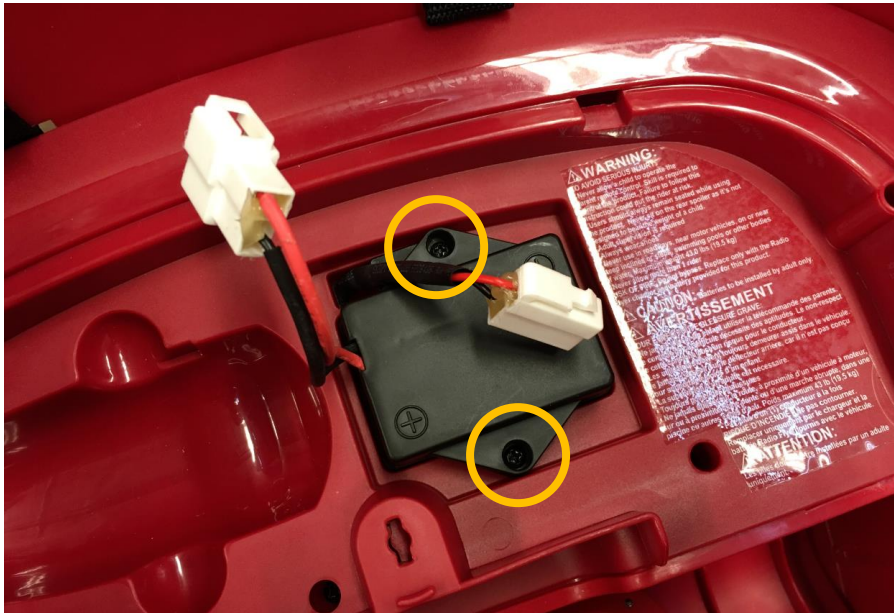


# #930 Motor Swap

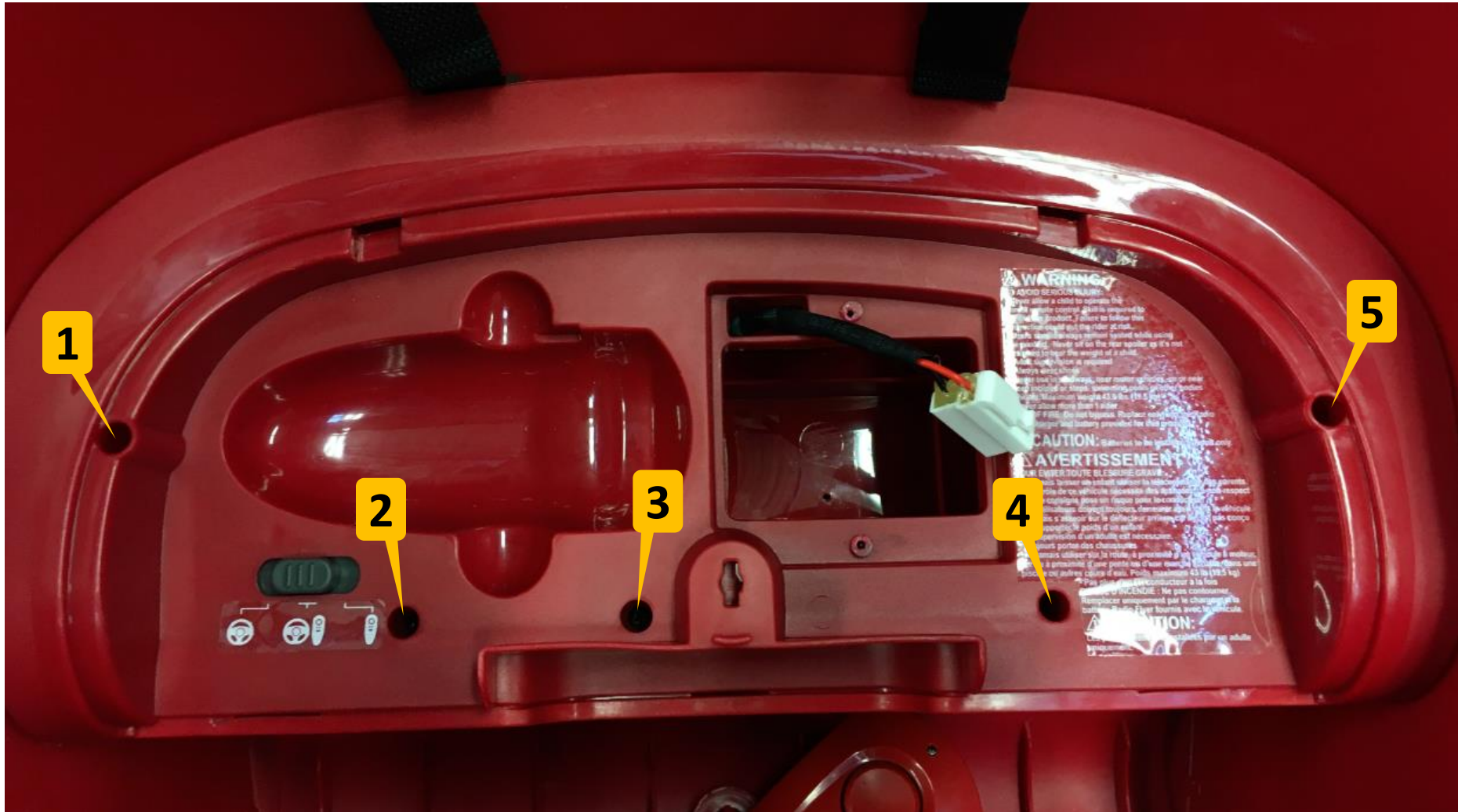
**Turn the car off and remove the seat. Place the remote to the side.**



**Disconnect the battery and remove the 2 screws holding it in place. Pull up on the battery to remove it from the car.**



**Remove 5 screws from the locations shown below.**

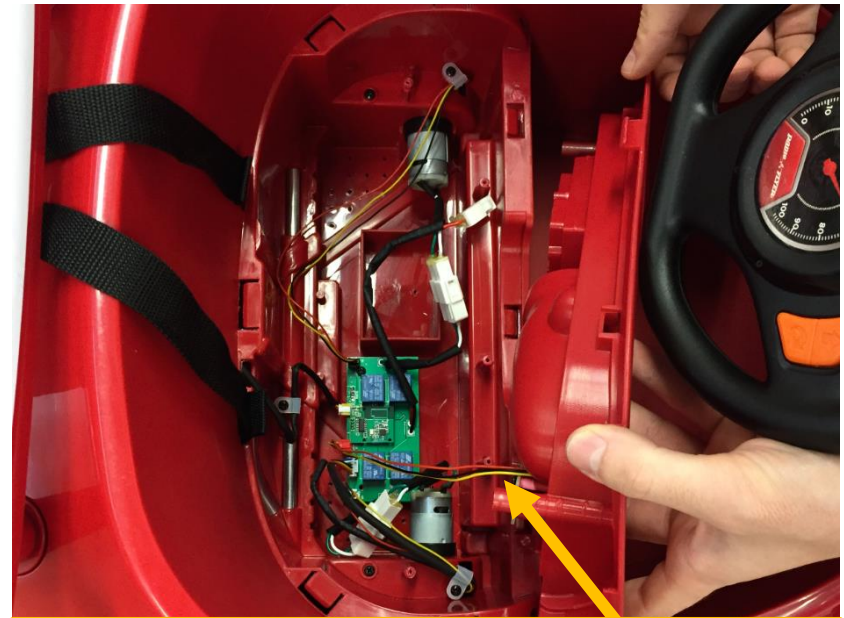


**Push the battery connector into the space under the seat.**



**Remove the seat by pulling up on the hole where the battery was with your right hand. Place your left hand over the mode selection switch. Do not press down with your left hand.**

**Lift with your right hand, while holding the your left in place.**



**Carefully lift the seat, there are wires connected to its bottom.**

**This may be difficult as a snap feature at the back of the seat holds it in place, the tray will suddenly pop out of place.**

**Use a flat head screw driver to pop the wheel covers free.  
Complete on both sides.**



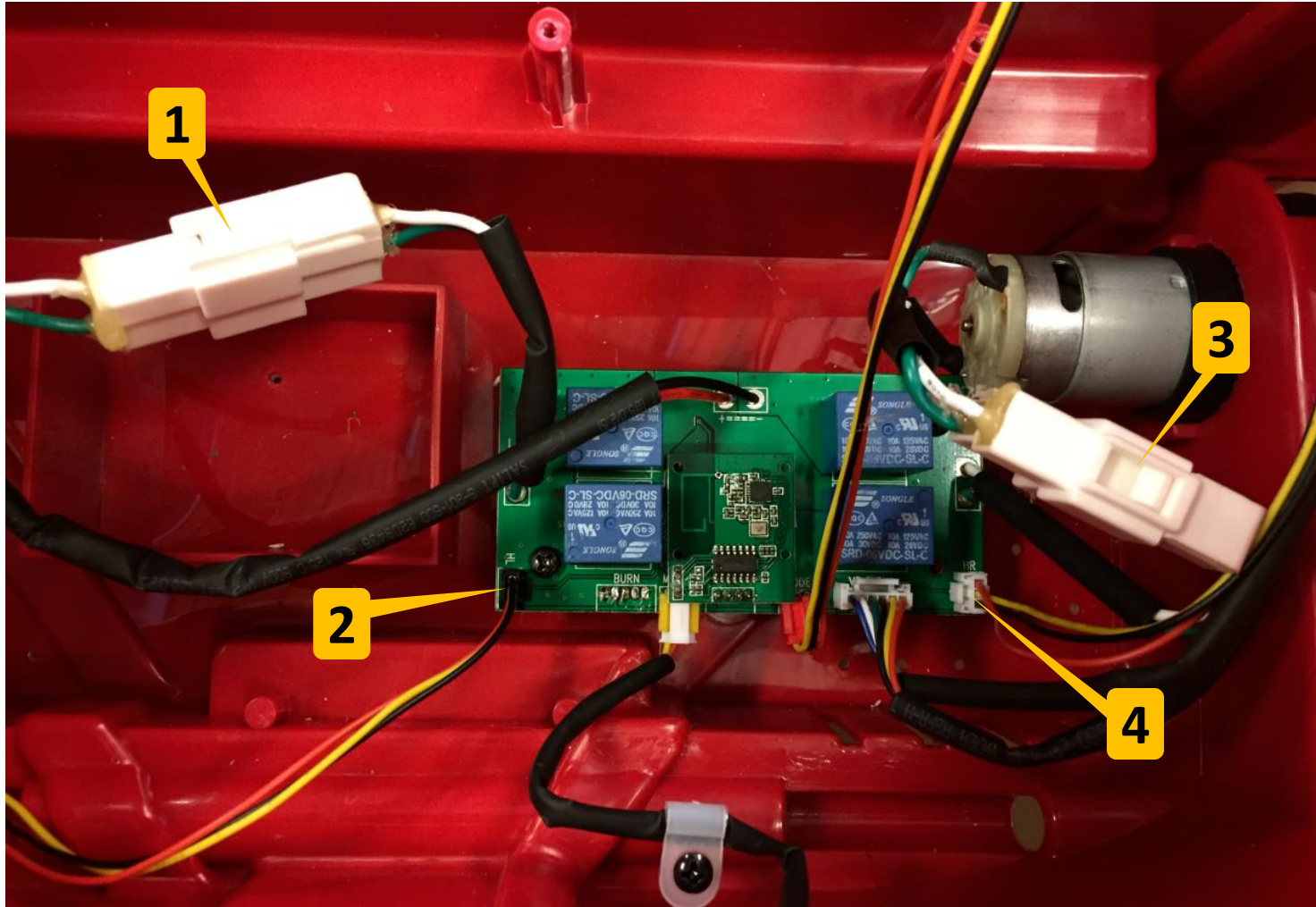
**Free the axle by simultaneously undoing the nuts on both ends. Note that only one nut should come loose.**



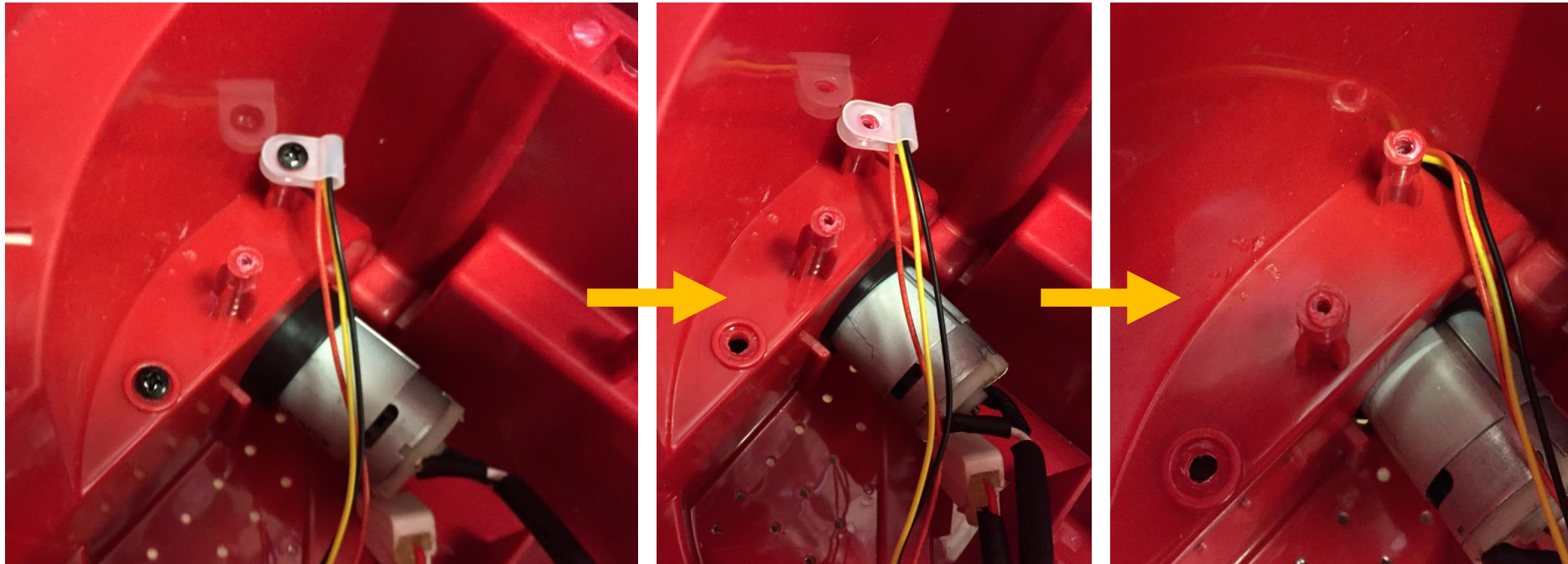
**Remove the wheel with the loose nut and washer. Pull the axle free from the other side.**



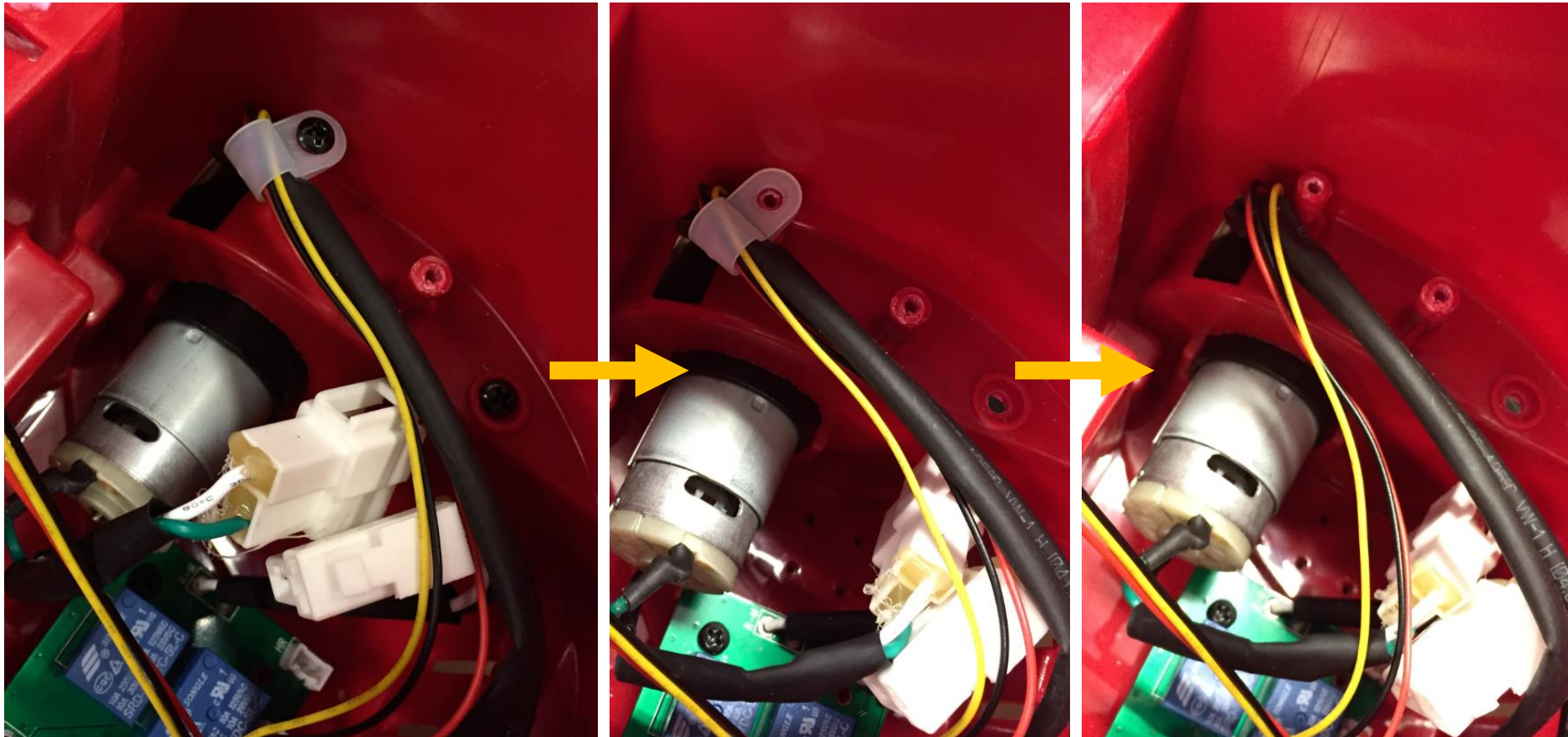
**Disconnect the 4 connectors shown below.**



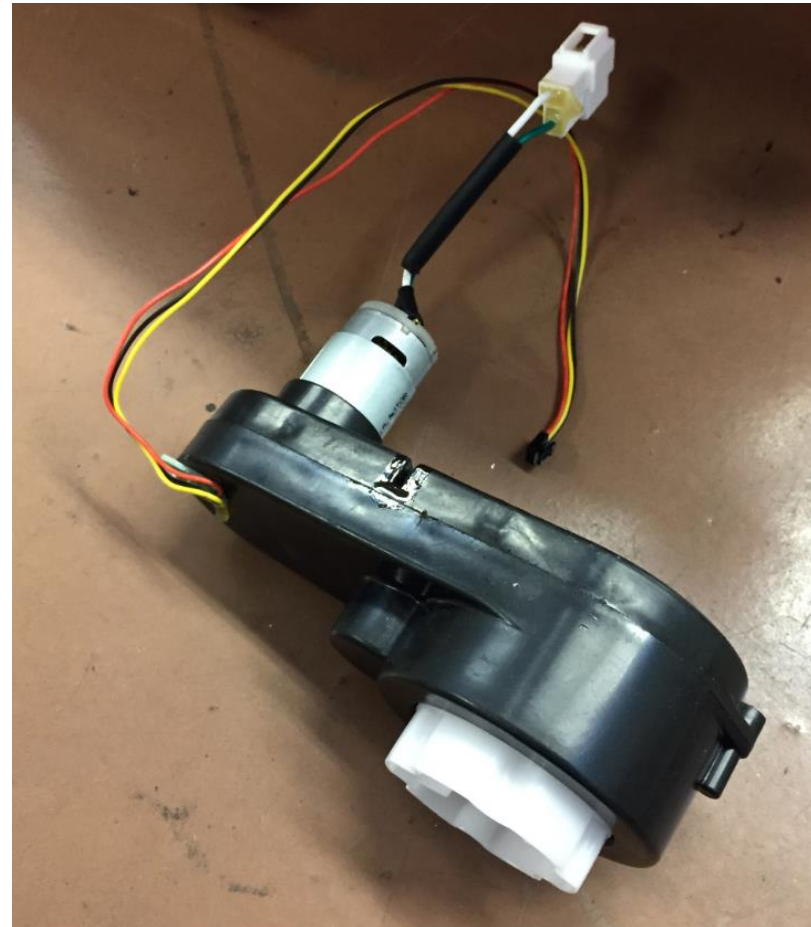
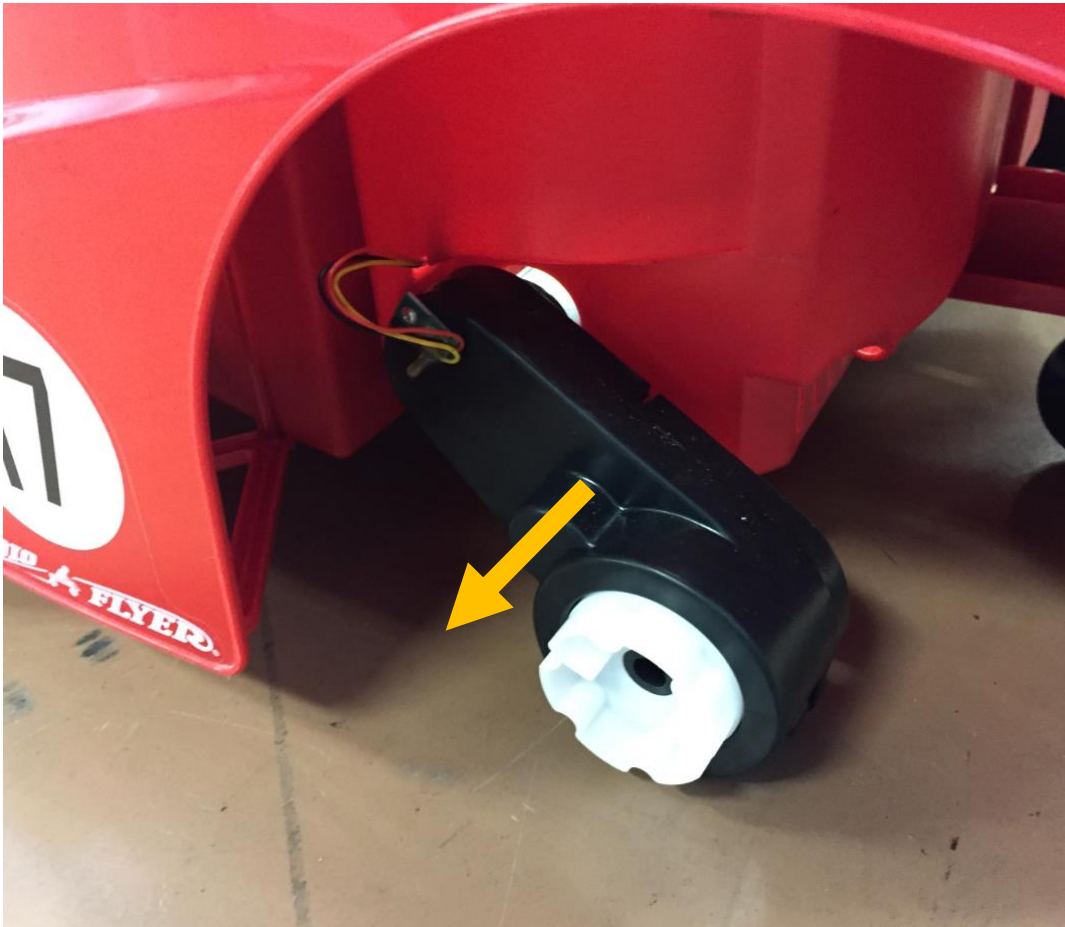
**Unscrew 2 screws above the left motor. Remove the plastic clip that's on the wires.**



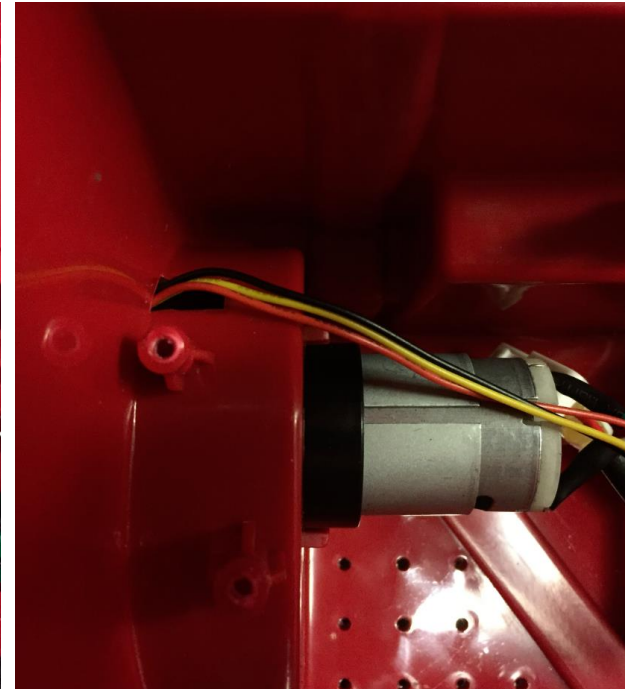
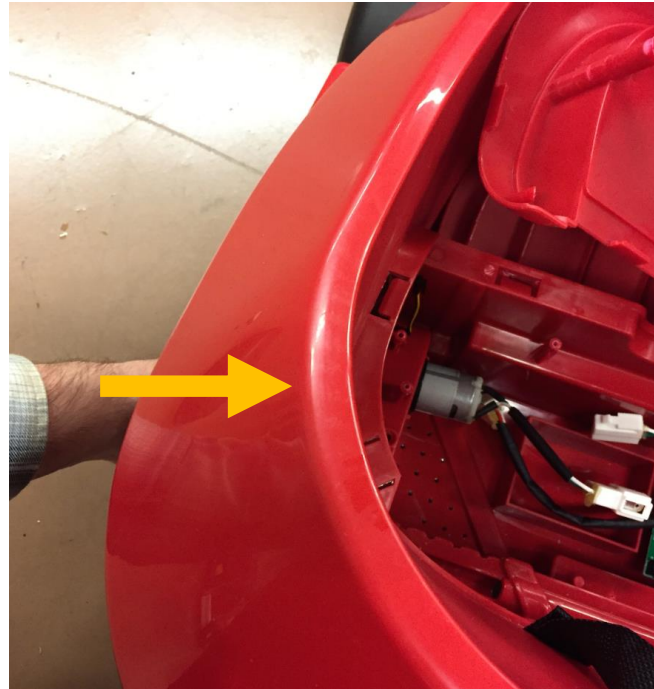
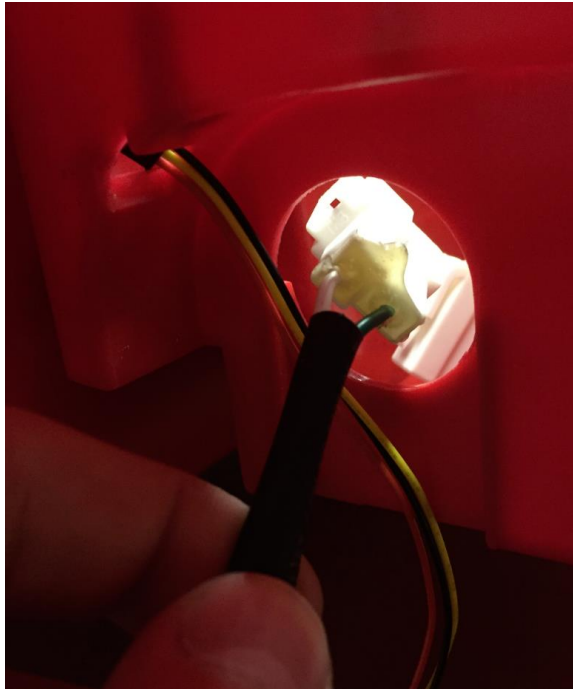
**Repeat the process for on the right side. Unscrew 2 screws and remove the plastic clip that's on the wires.**



**Pull the motors free from the car, you may have to guide the wires out of their respective holes.**

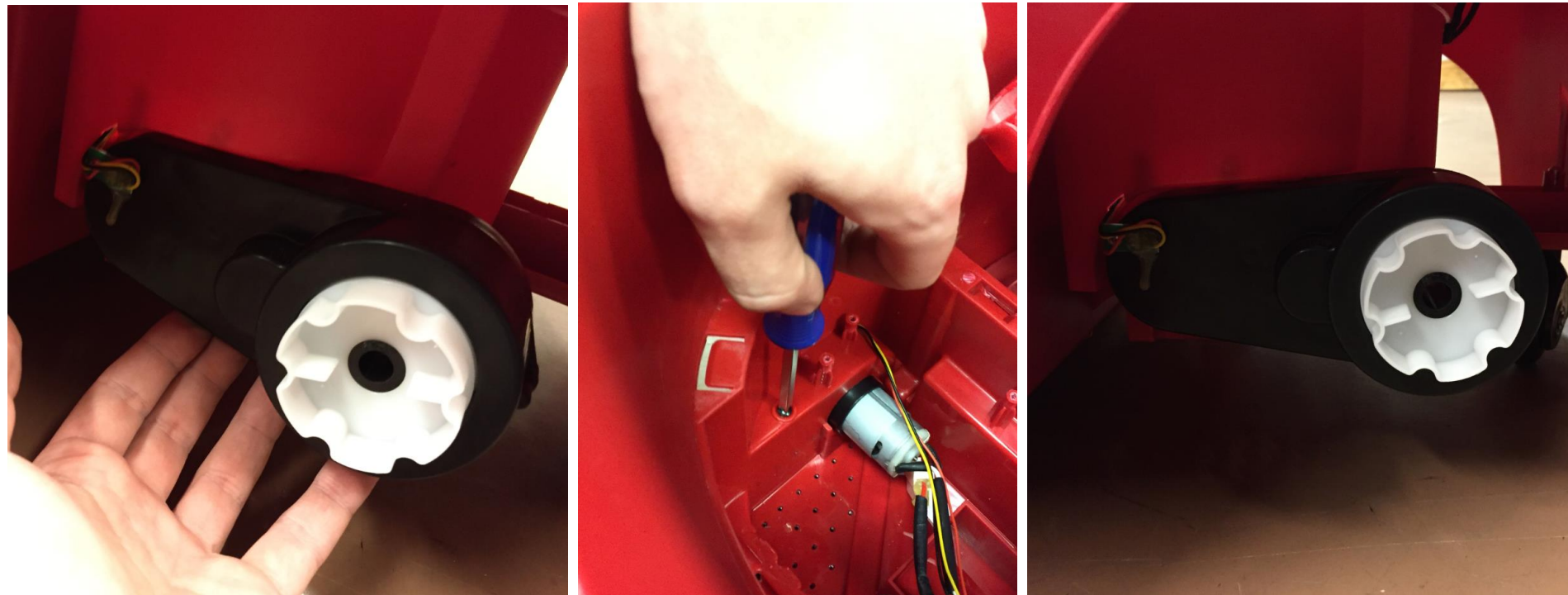


**Place the new motors into the cars. Feed the wires into the holes they came from. Push the motor into the car until it's flush against the body, it should look like the image below.**



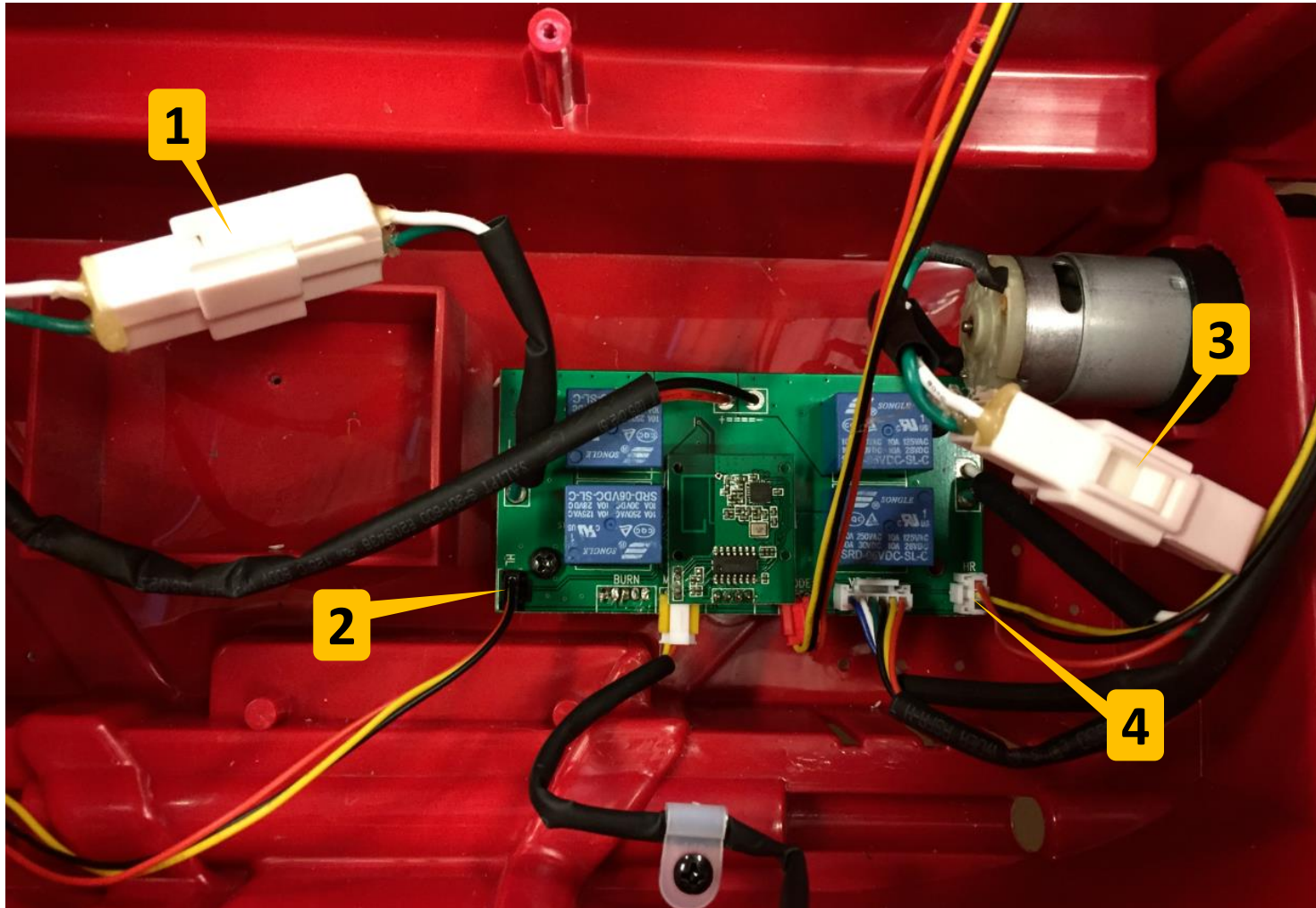
**Repeat the process on both sides of the car.**

**Screw the motors in place. Hold the motor up while placing a screw into the hole shown below. If done correctly, the motor will hang from the underside of the car.**

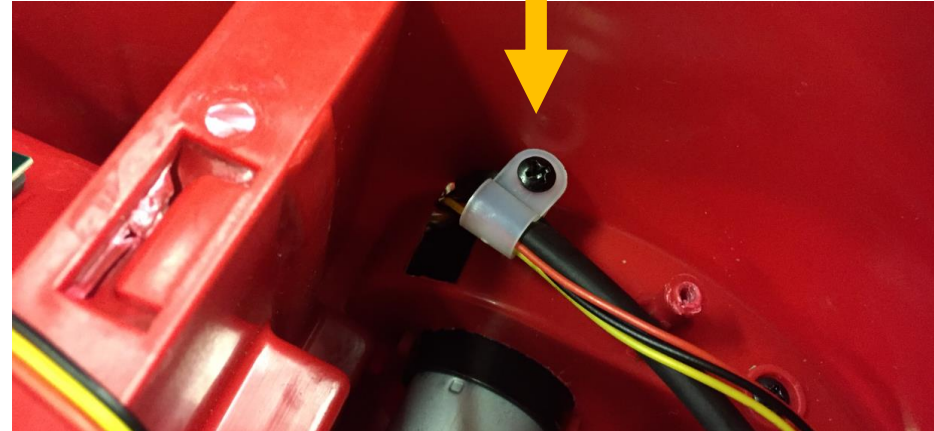
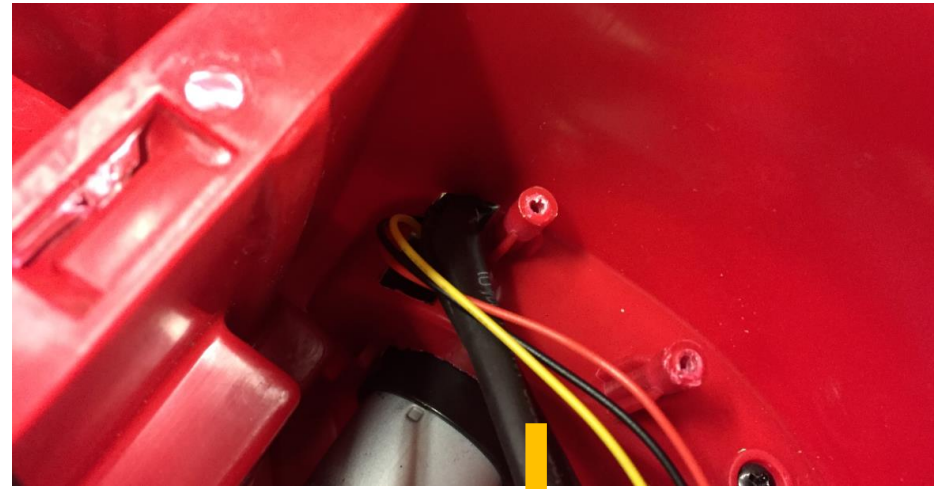
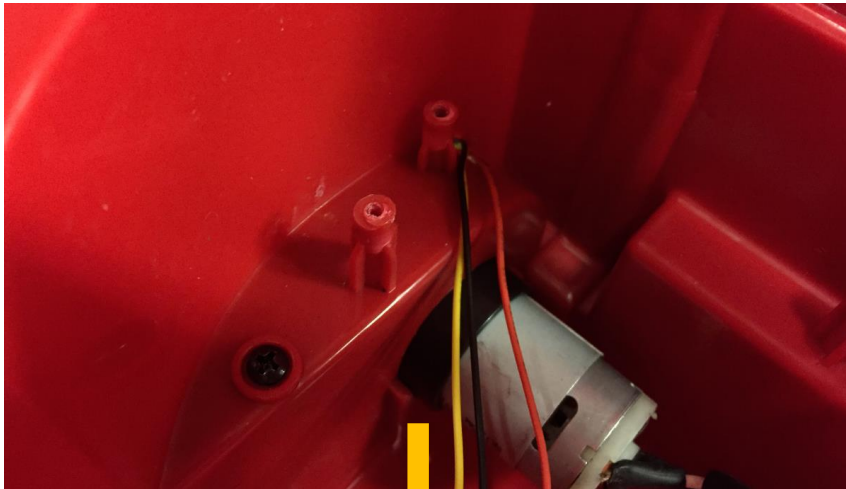


**Repeat the process on both sides of the car.**

**Reconnect the 4 connectors that were removed earlier.**



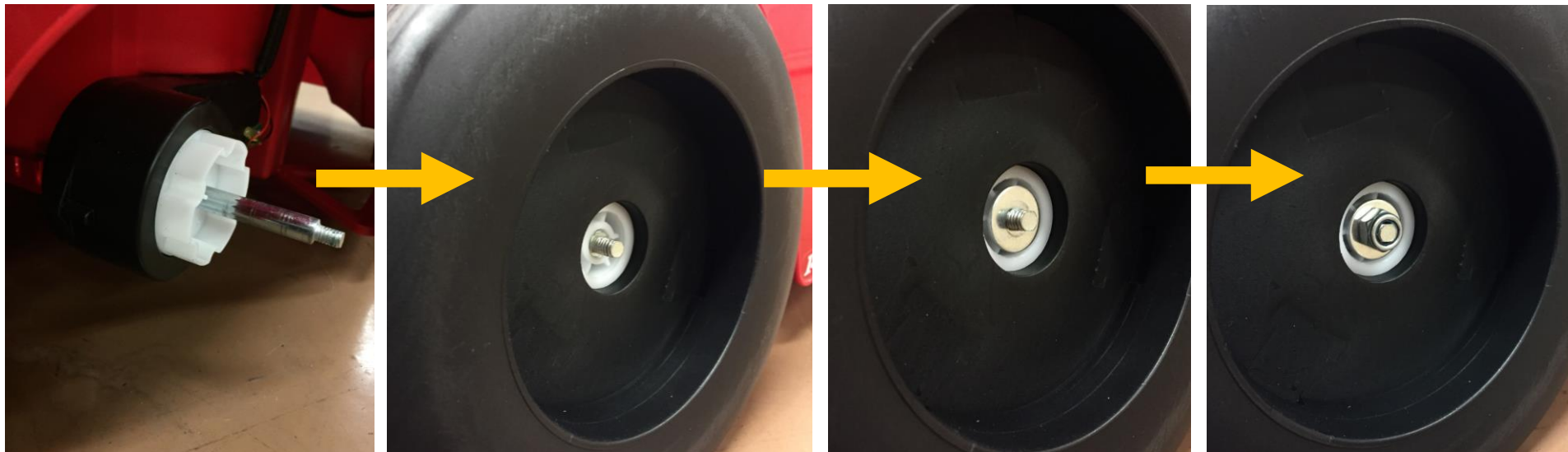
**Push the clips back over the wires on both sides of the car. Screw them back in place, be sure not to accidentally screw through the wires.**



**Feed the axle back through the car. You may need to spin it while pushing to get it to reach all the way through.**



**Reinstall the wheel by following the process below.**

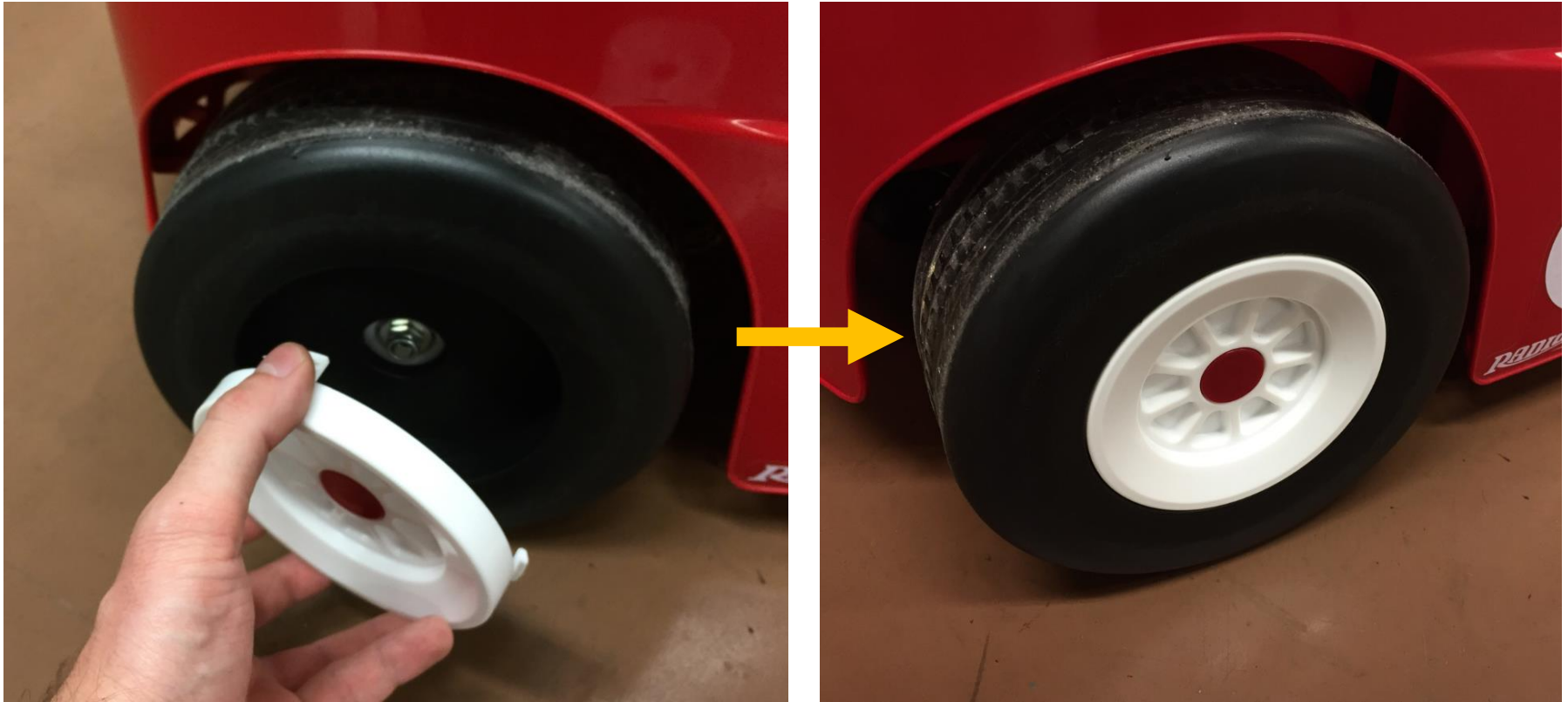


**Push the wheel onto the axle, you may need to rotate it to get it to settle in place.**

**Place the washer onto the axle**

**Fully tighten the nut in place**

**Press the wheel covers back in place on both sides of the car.**



**Push the battery connector back up through the seat. Then press the seat back down into place. Reinstall the 5 screws.**



**Reinstall the battery and seat cover. You're ready to ride!**

