

#939 Direction Switch Swap

Make sure the car's power is switched off. The LED should not be lit.

On Position

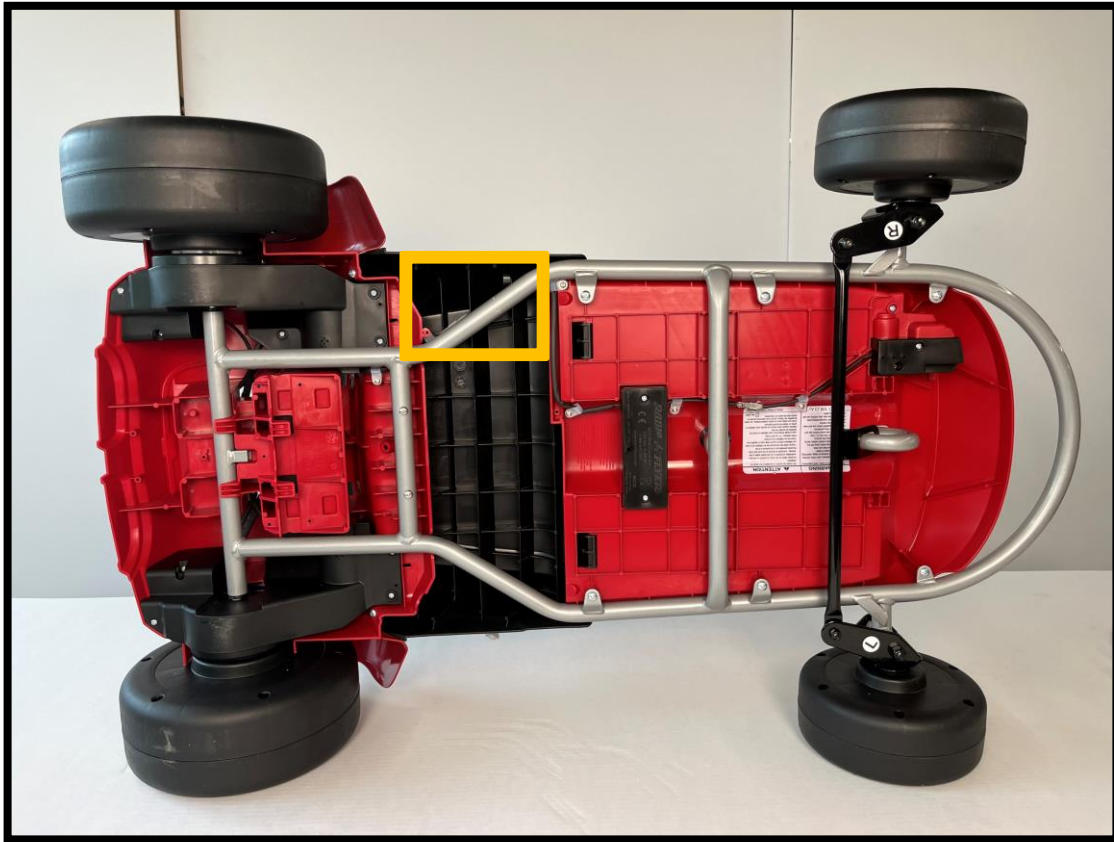


Off Position

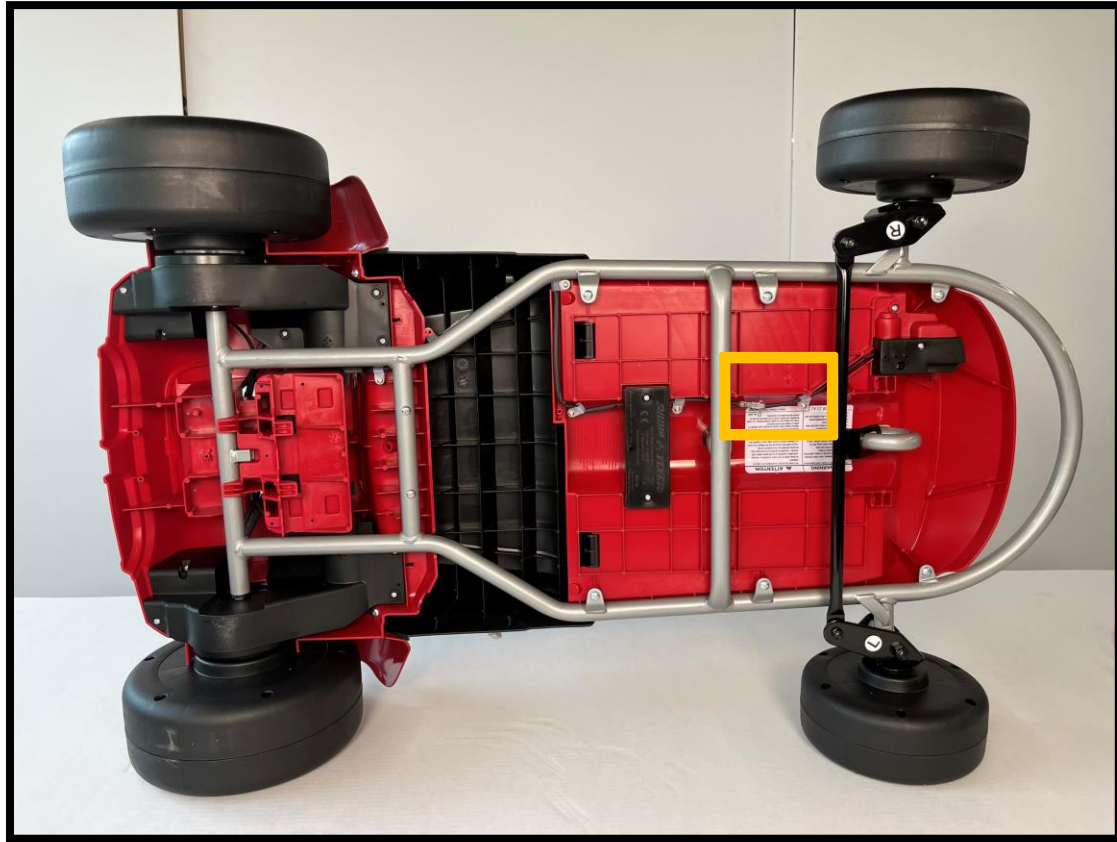


Turn the car on its side.

Disconnect the direction switch from the main harness.

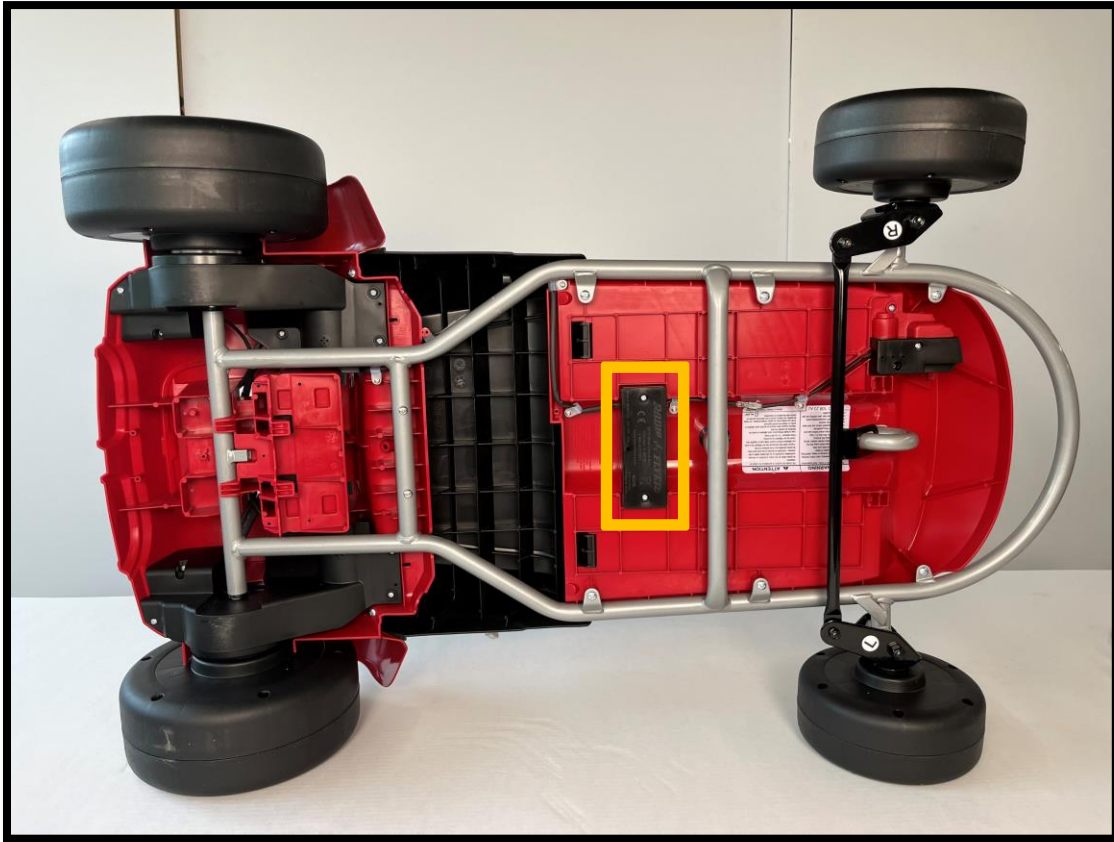


Disconnect the direction switch from the pedal.

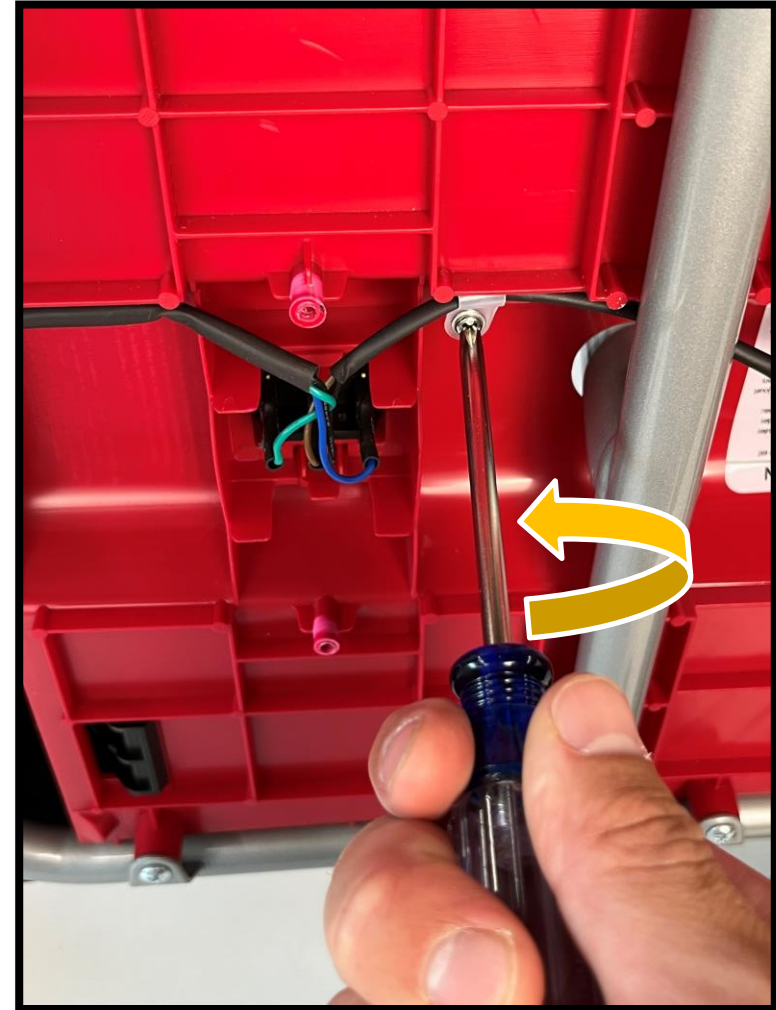


Remove the 2 screws from the direction switch cover.

Pull the cover free.

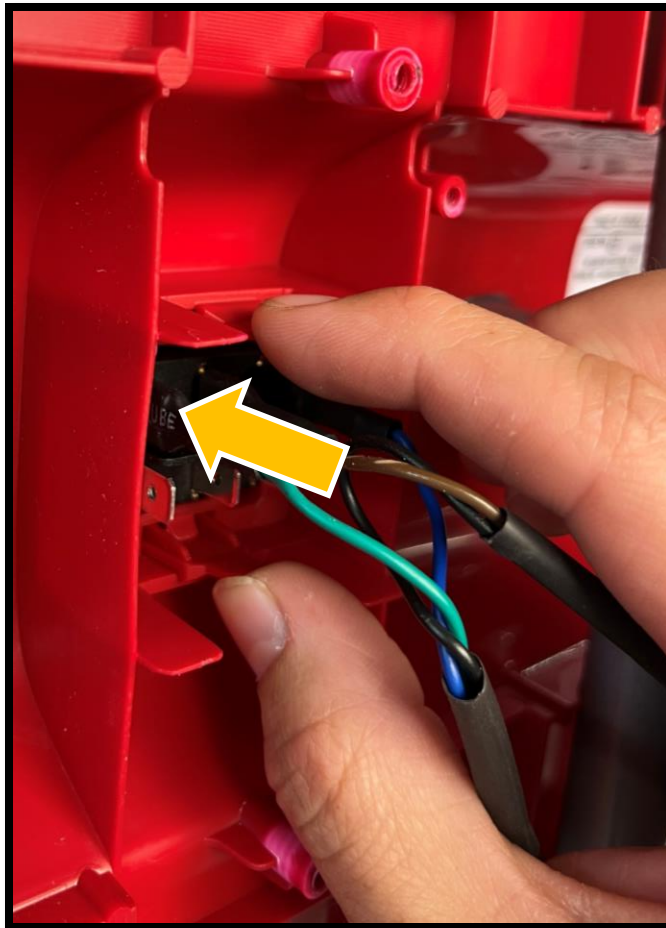
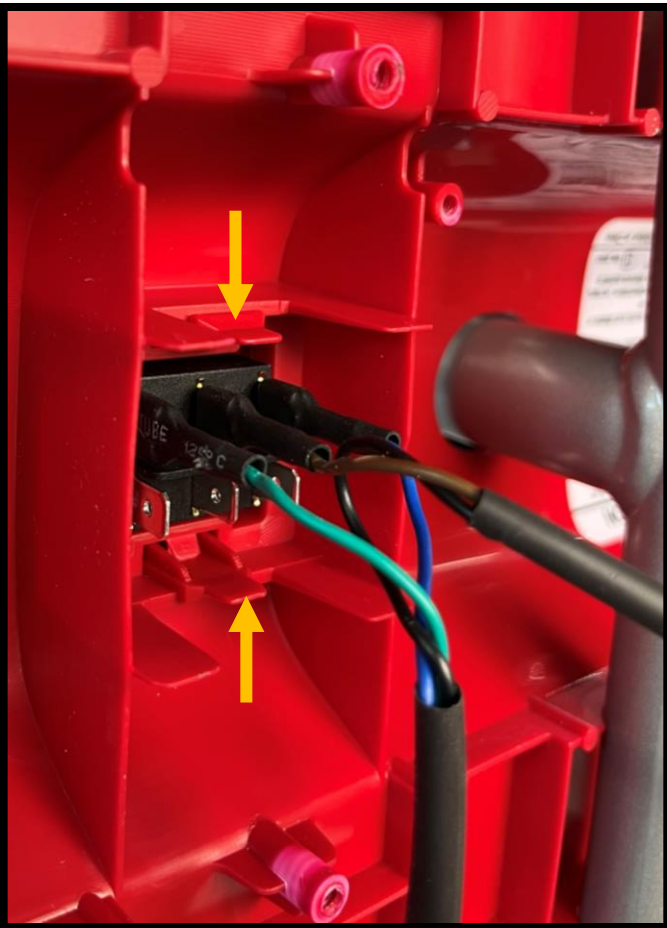


Remove the 3 strain reliefs fastening the wires for the direction switch to the bottom of the car.



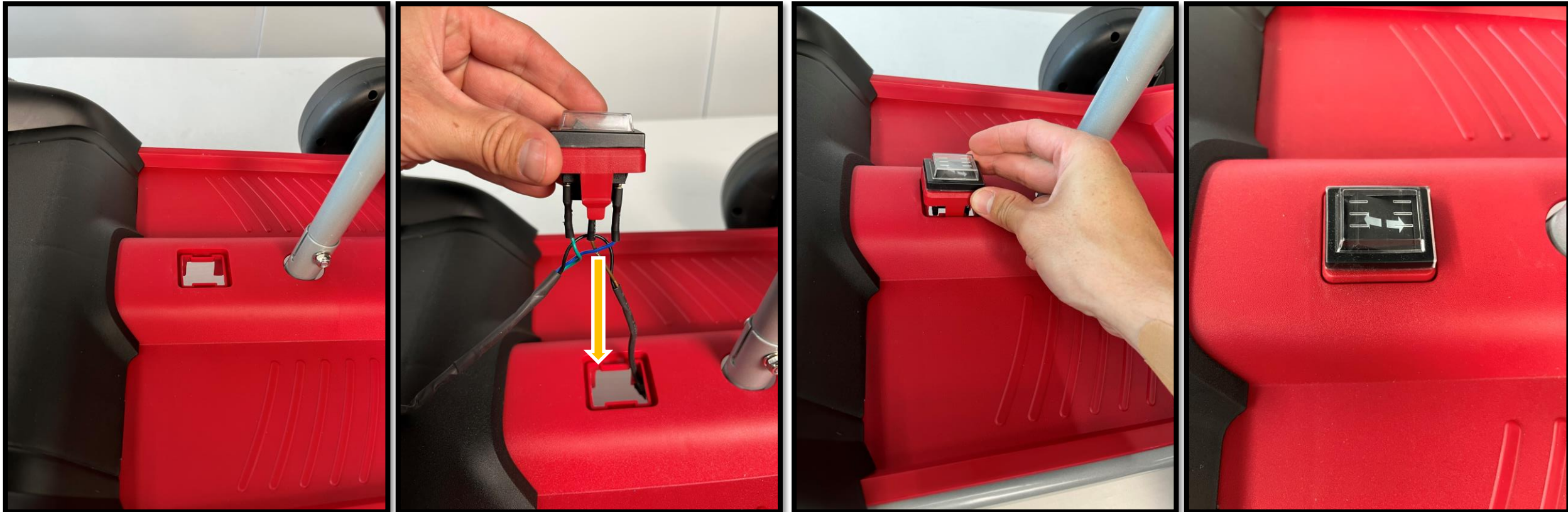
Press the tabs on either side of the direction switch and push it through the top of the car.

Pull the switch free from the car.



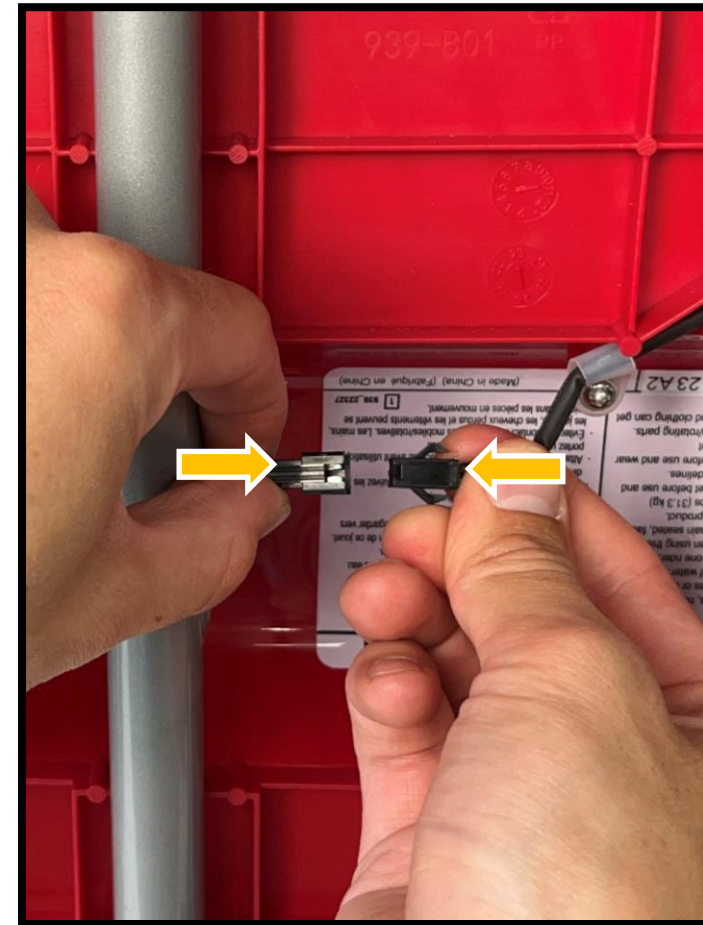
Insert the new direction switch into the car. Note, the blue wire should be at the front of the switch (toward the front of the car) when installed. Incorrect orientation will result in reversed function.

Firmly press the switch into place.



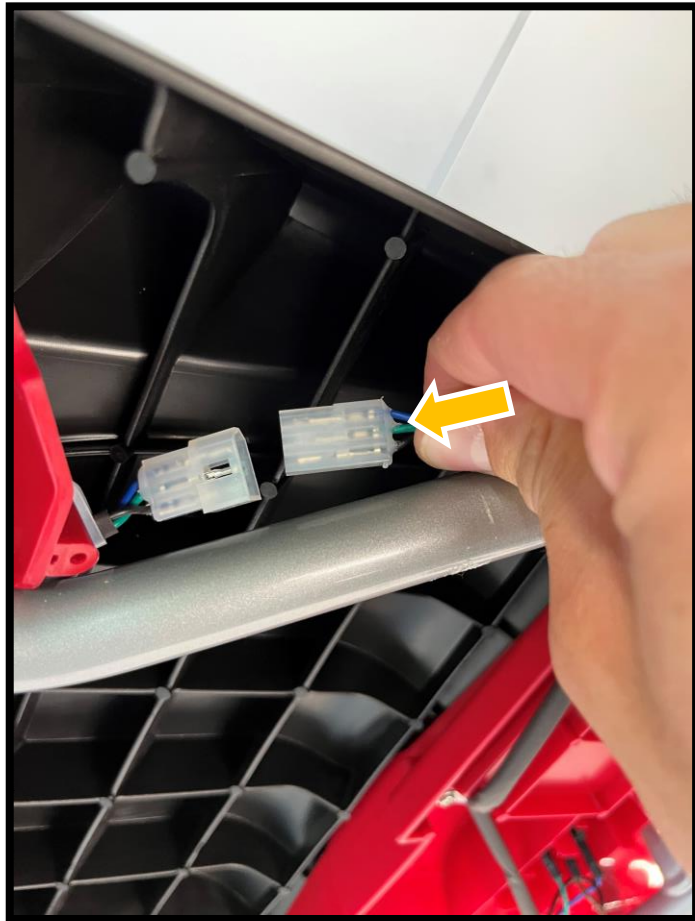
Route the direction wire under the frame toward the pedal.

Connect the direction switch to the pedal



Route the wire with the translucent connector through the channel, just before the seat.

Connect the switch to the main harness. Be sure to feed the connector under the frame.



Secure the wires to the bottom of the car with the 3 strain reliefs in the locations shown below.

Replace the switch cover and fasten with 2 screws.

