

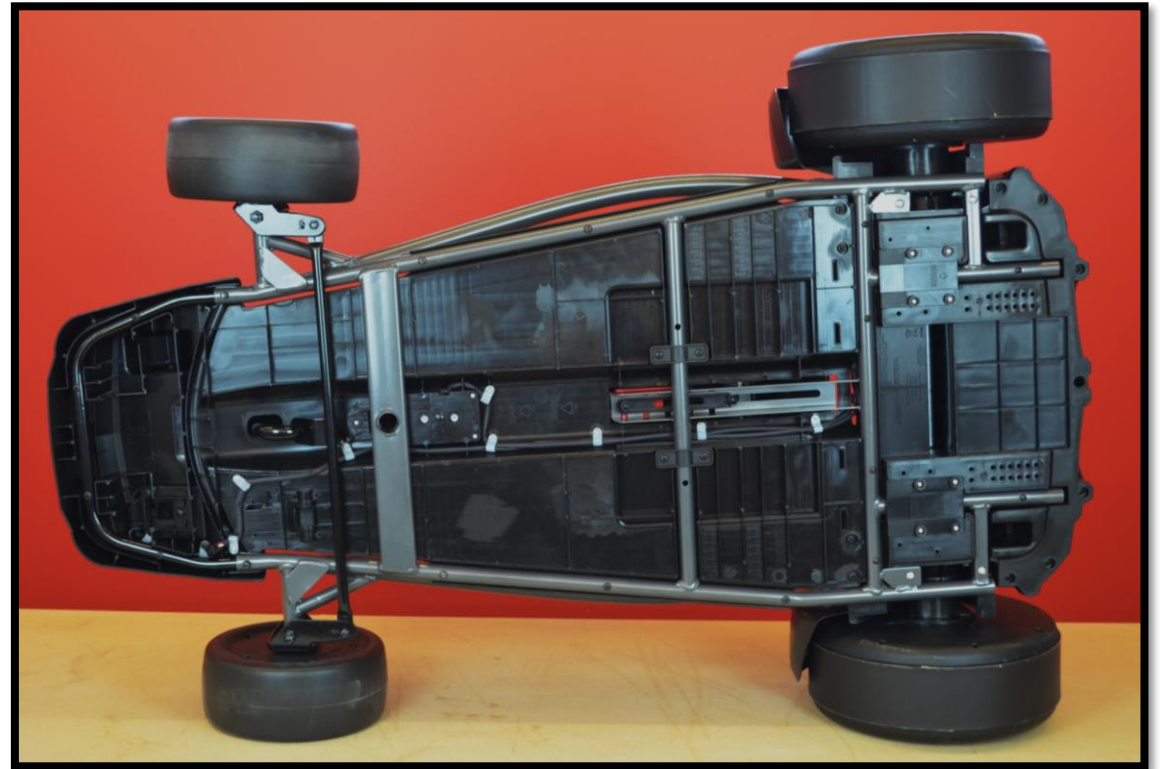
#942 Connector Checks

- **Phillips Head Screwdriver**



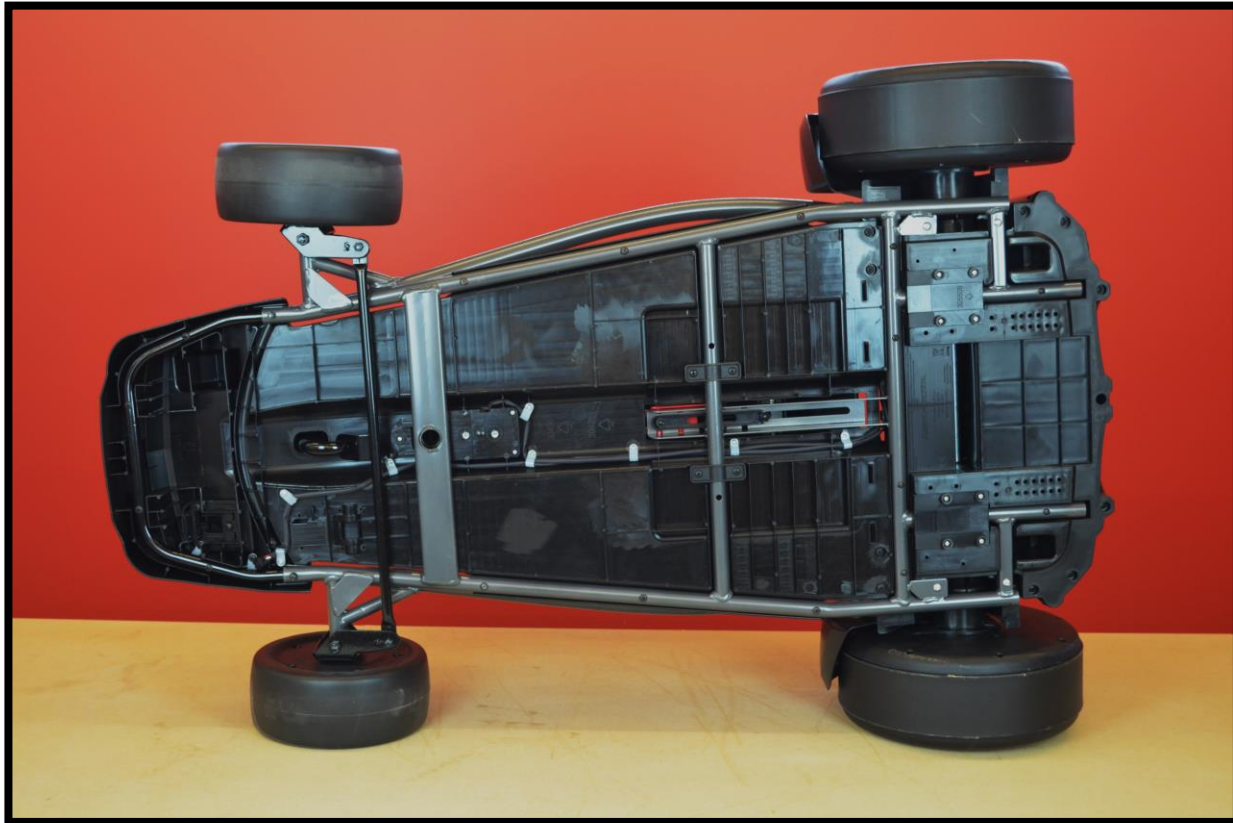
Slide the seat forward and unbuckle the seatbelt.

Turn the kart on its side.



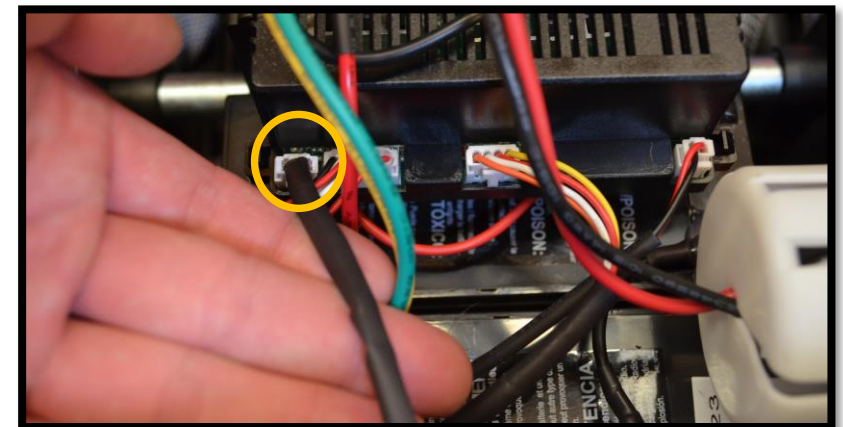
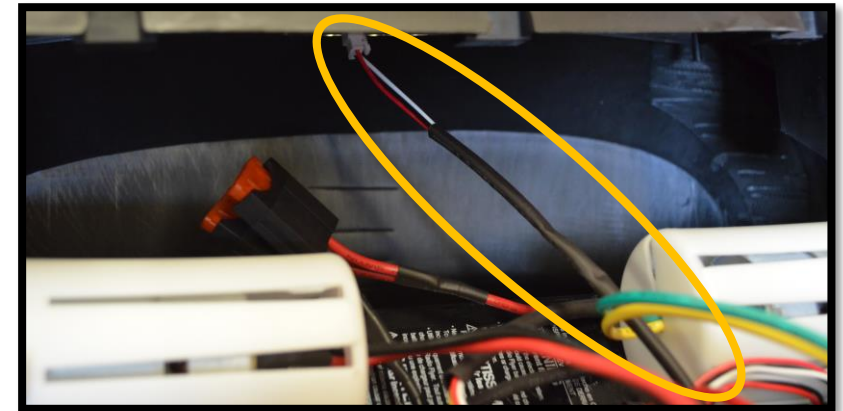
Turn the kart over on its side.

Use a Phillips head to remove the 11 screws securing the rear cover.

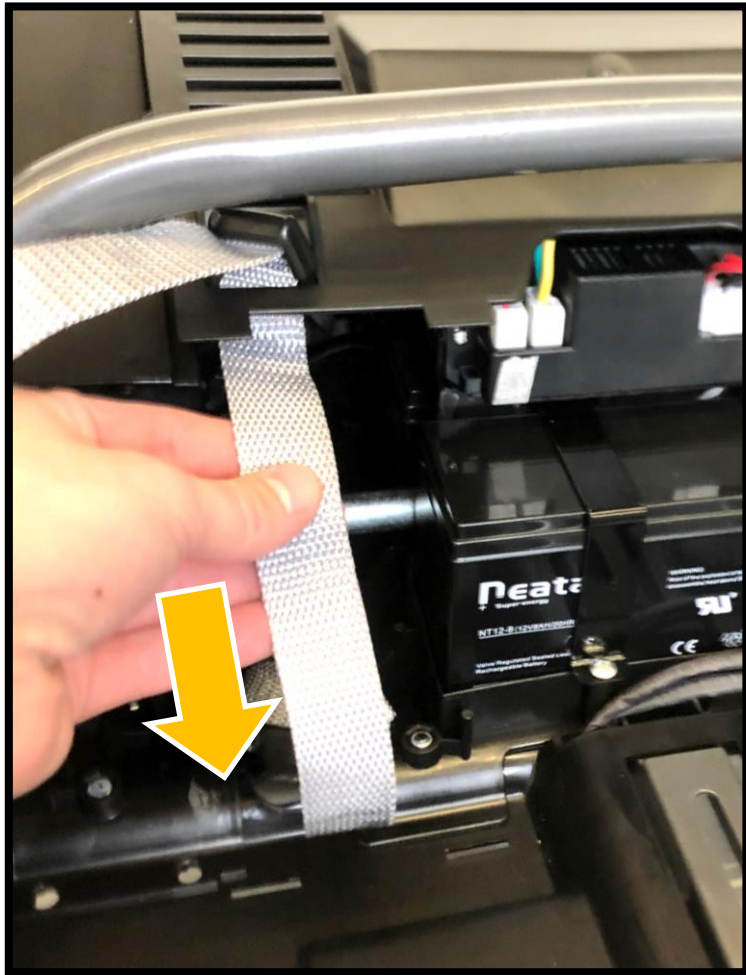


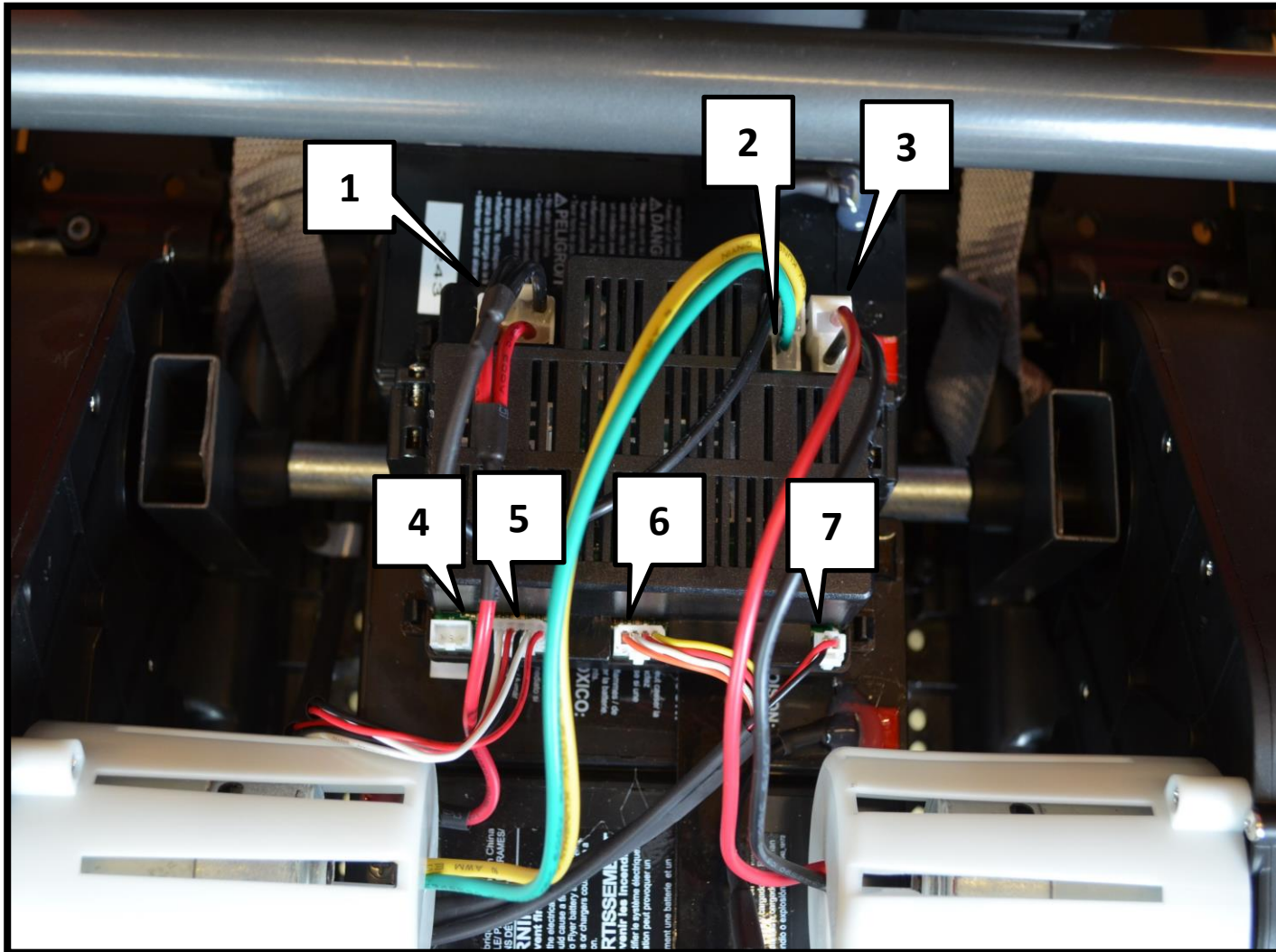
Turn the kart back over. Remove the rear cover by pulling up slowly.

Note there is still a connection between the cover and the rest of the kart. Disconnect this cable from the PCBA.



Remove the seatbelts from the rear cover to completely free it from the kart.



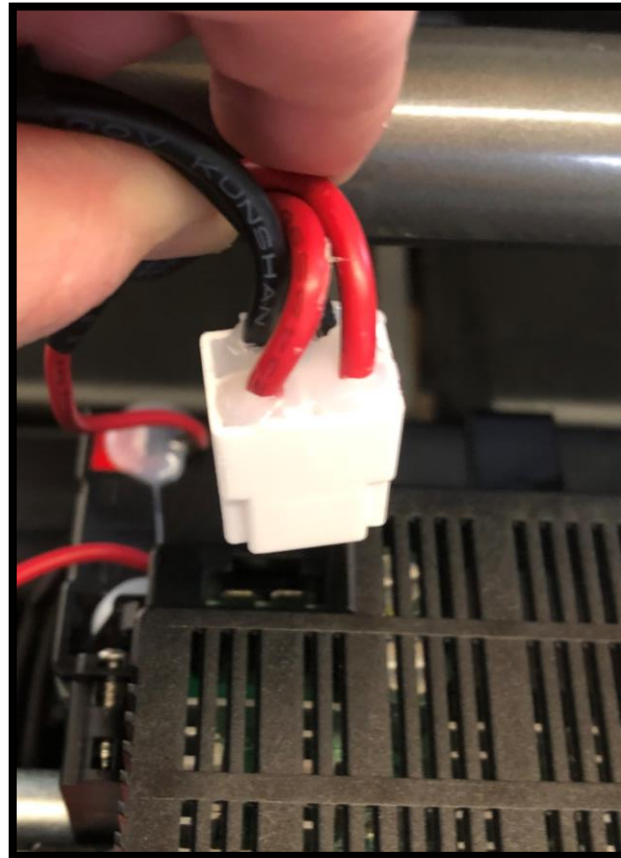


- 1. Battery**
- 2. Left Motor**
- 3. Right Motor**
- 4. Power Level Indicator**
- 5. Pedal & Shifter**
- 6. Power Switch**
- 7. Charge Port**

**See the following pages for an overview of each connection.*

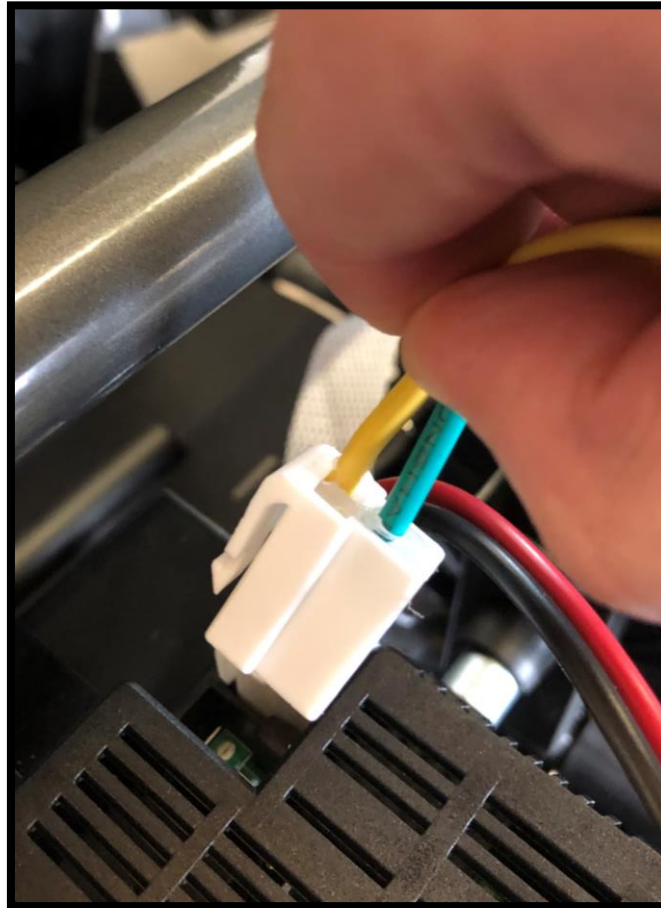
Battery

- Disconnecting will result in loss of power



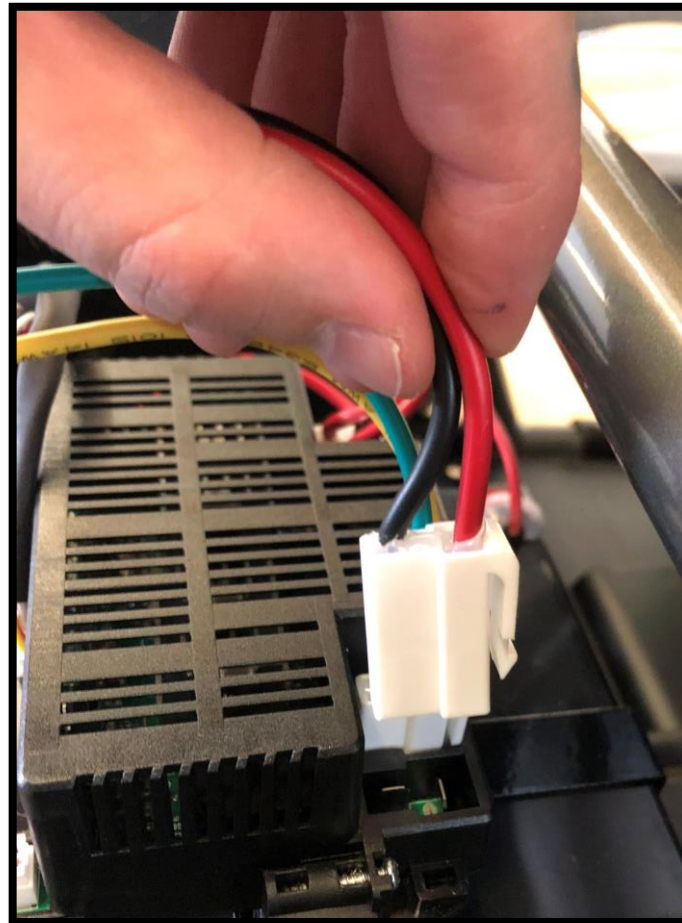
Left Motor

- Left motor will not operate when disconnected



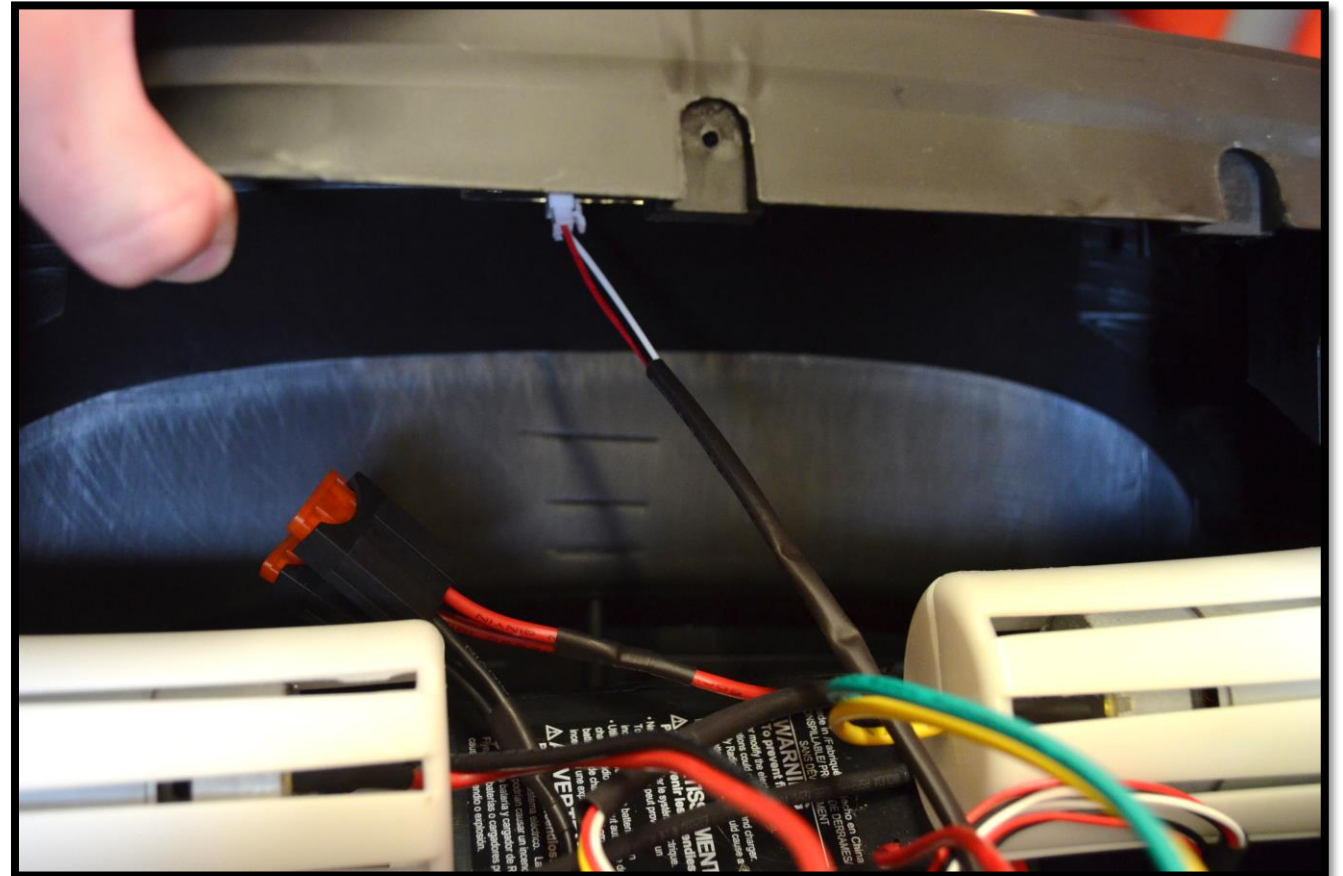
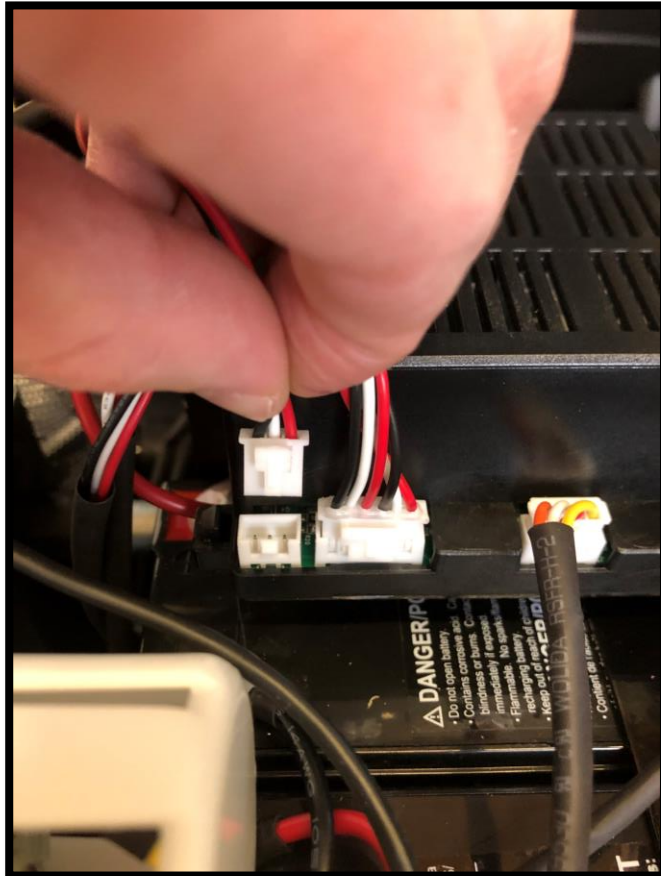
Right Motor

- Right motor will not operate when disconnected



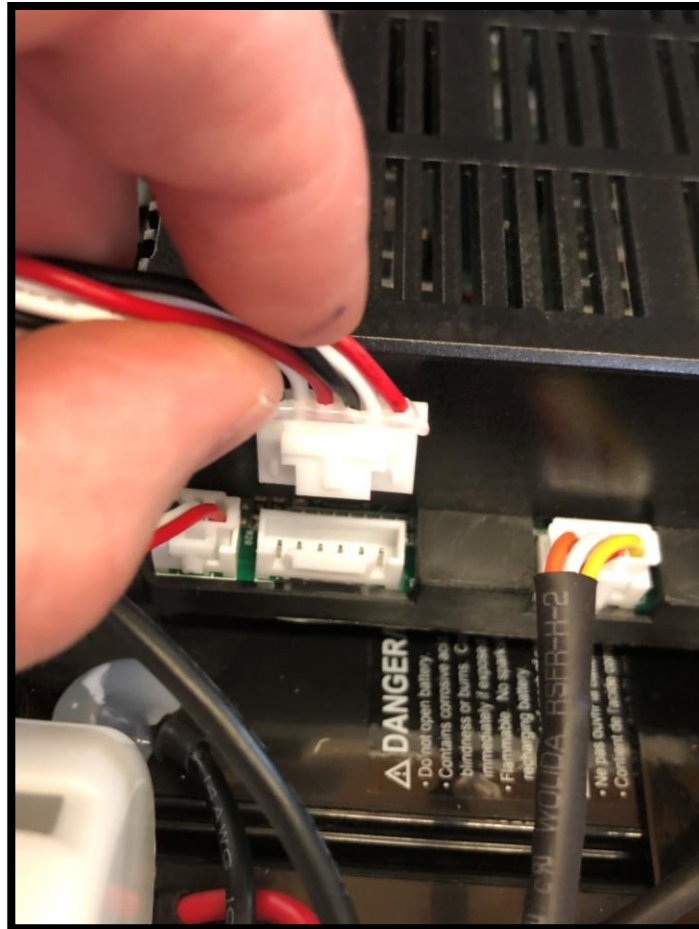
Power Level Indicator

- Lights on the rear bin lid that indicate power level will not turn on if disconnected.



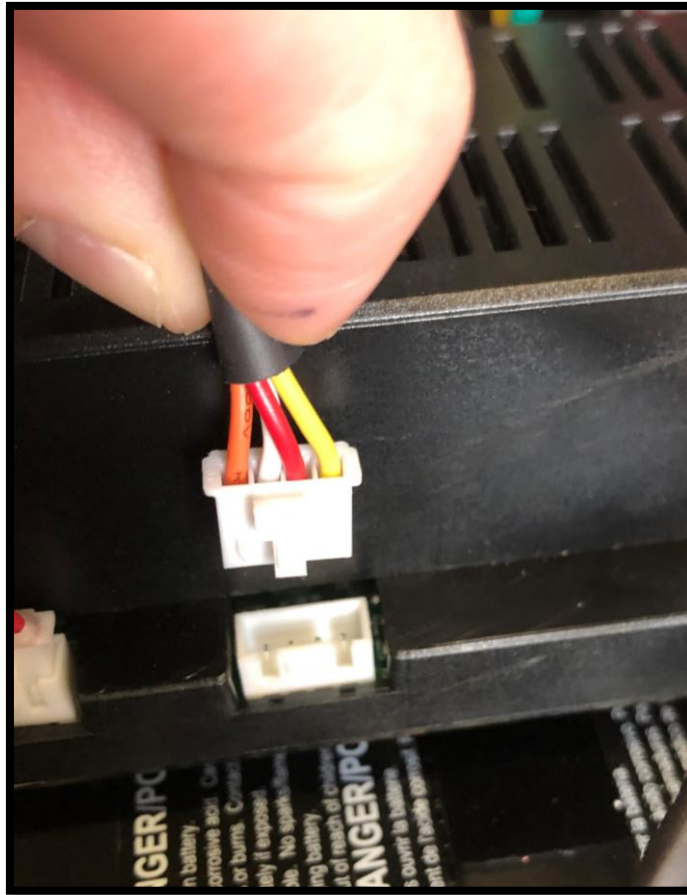
Pedal & Shifter

- Disconnection will result in a 4-flash error
- Product will not accelerate in any direction at any speed



Power Switch

- Product will shut off if disconnected during use
- Product will not power on if disconnected while off.



Charge Port

- Product will not charge if disconnected
- Disconnected charge port does not affect product function

